

# ***Catastrophic Call-Out Program***

***Attorneys On Call 24/7***

***Casualty, Property and Cargo Response Team***

**Illinois | Indiana | Wisconsin**

**65 E. Wacker Place, Suite 1220  
Chicago, IL 60601  
847.625.8200  
[orleanscanty.com](http://orleanscanty.com)**

## **TABLE OF CONTENTS**

Click on tab number to go to page

### **TAB**

Attorney Contacts .....	1
Area Map .....	2
Venue Volatility Map .....	3
State Police Districts (Illinois, Wisconsin, and Indiana).....	4
Sheriff Departments (Illinois) .....	5
TPA/Experts/Consultants. ....	6
Investigation Checklist .....	7
Event-Data Recorder Vehicles .....	8
Attorney CVs .....	9

**ORLEANS CANTY NOVY, LLC**  
**CATASTROPHIC CALL-OUT PROGRAM**  
*COVERING NORTHERN ILLINOIS*  
*SOUTHEAST WISCONSIN and NORTHWEST INDIANA*

**Steven M. Canty (Team Coordinator)**

Cell: (847)338-1108  
Work: (847)625-8200  
E-mail: [scanty@ocnlaw.com](mailto:scanty@ocnlaw.com)

**Jason Orleans**

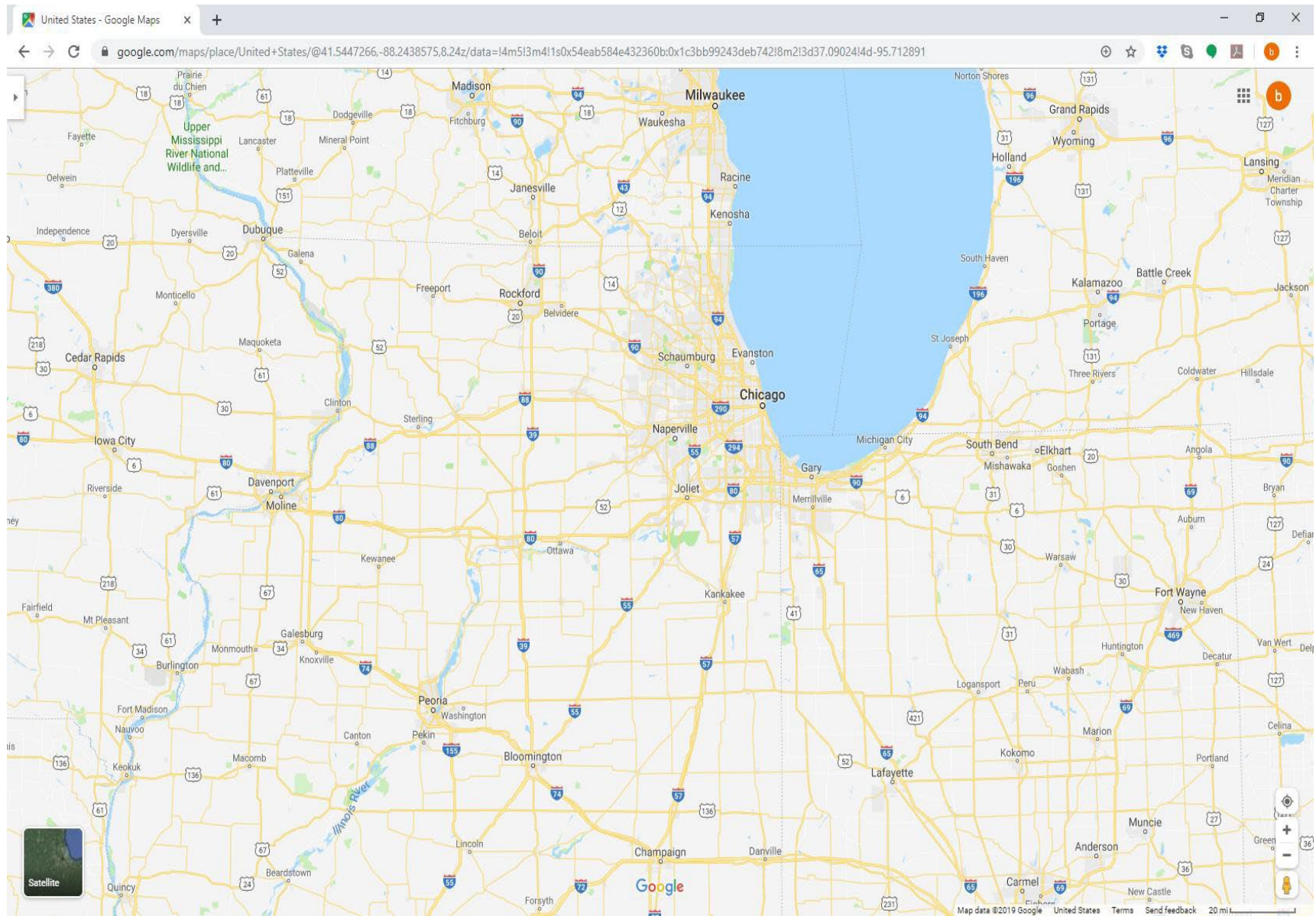
Cell: (847) 212-5739  
Work: (847) 625-8200  
E-mail: [jorleans@ocnlaw.com](mailto:jorleans@ocnlaw.com)

**Bradley A. Bertkau**

Cell: (914) 347-2199  
Work: (847) 625-8200  
E-mail: [bbertkau@ocnlaw.com](mailto:bbertkau@ocnlaw.com)

**Laura P. Gordon**

Work: (847) 625-8200  
E-mail: [lgordon@ocnlaw.com](mailto:lgordon@ocnlaw.com)



# VENUE VOLATILITY MAP

## Jury Venues

C = Conservative

~~VC = Very Conservative~~

L = Liberal

**M** = Moderate

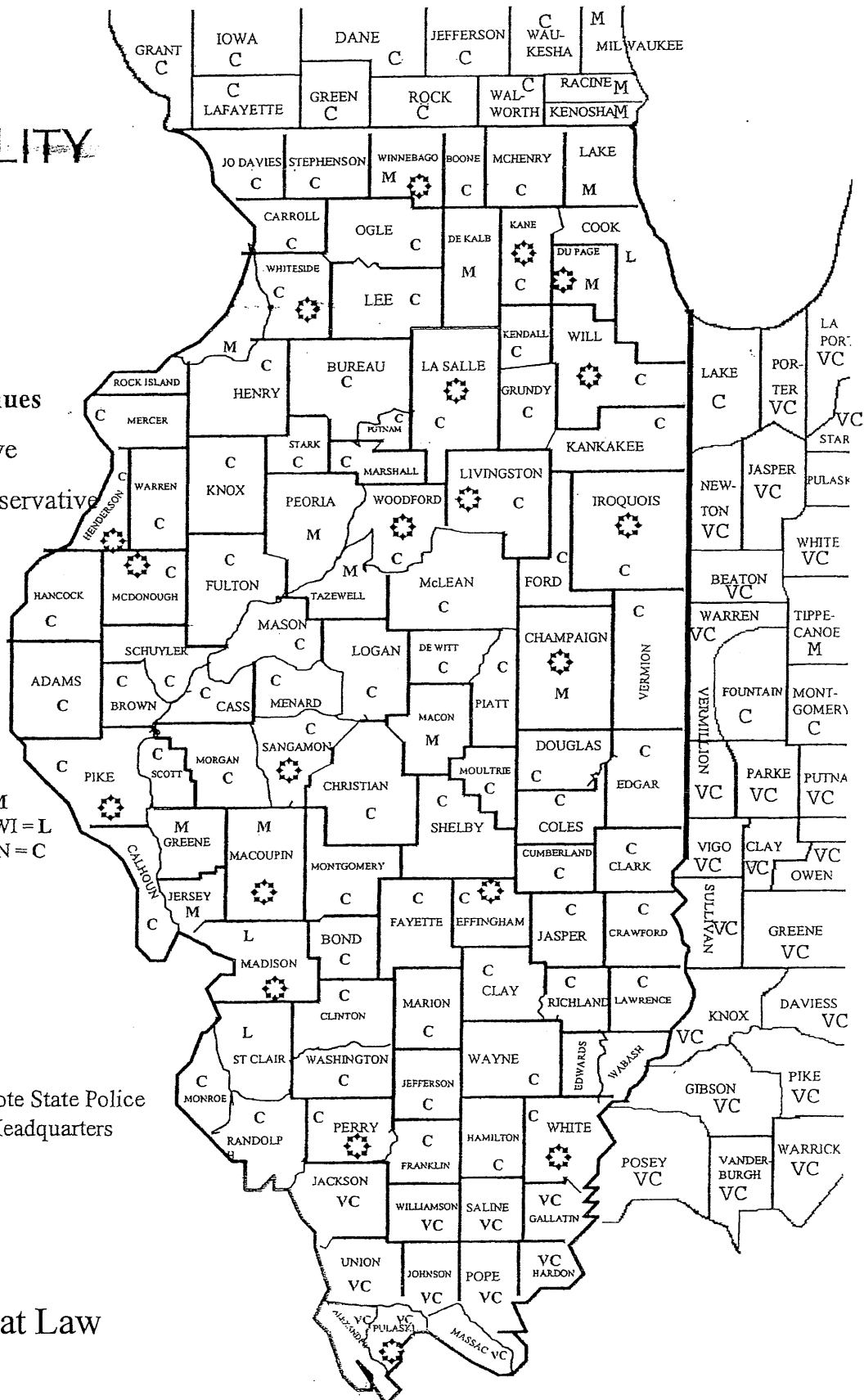
Racine, WI = M

Kenosha, WI = L

Lake County, IN = C

✱ Denote State Police  
Headquarters

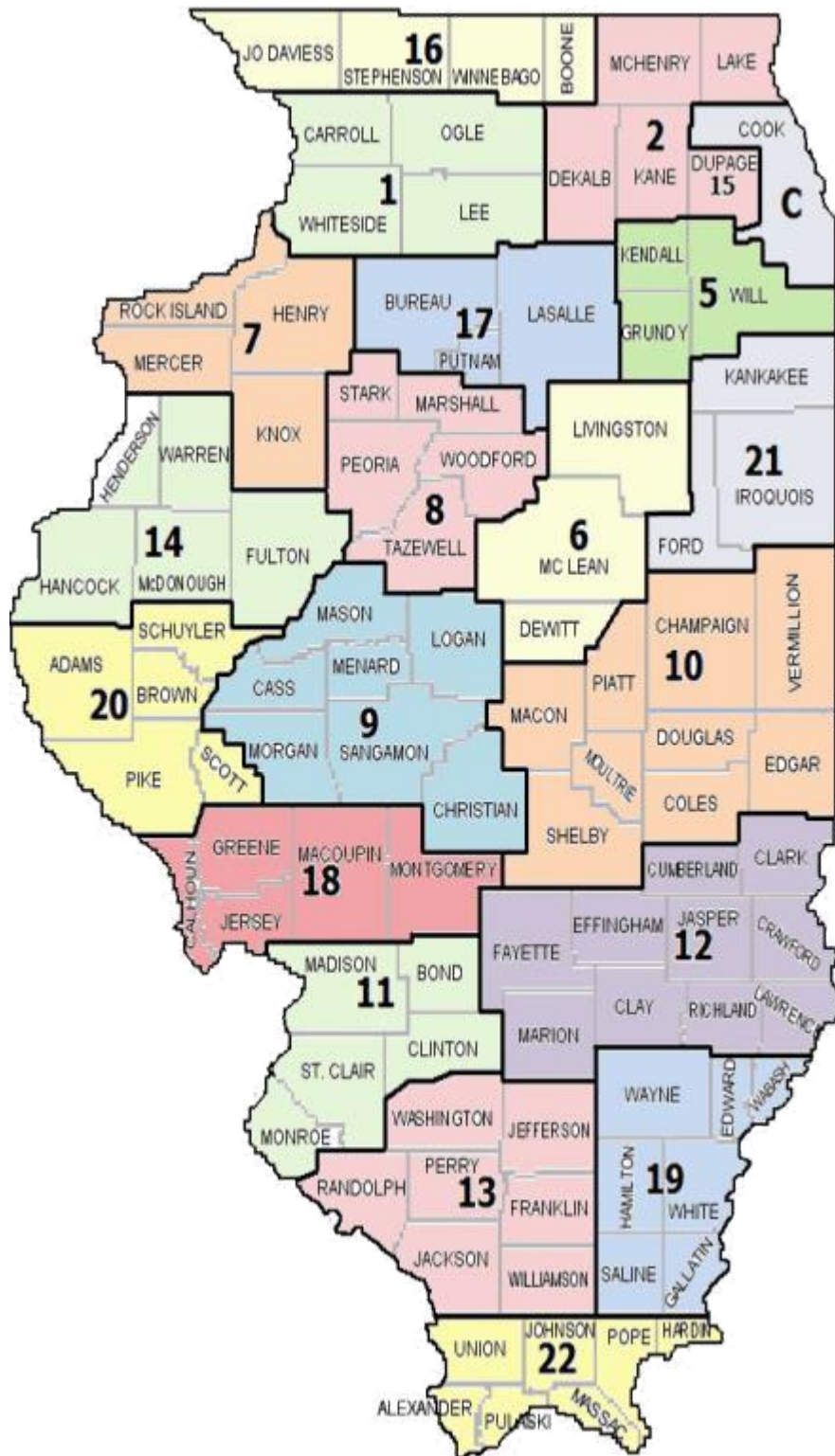
Attorneys at Law



# Illinois State Police

## District Map

Go to: [Illinois State Police Home Page](#)





# Indiana State Police

## District Map

Go to: [ISP: Home \(in.gov\)](http://isp.in.gov)



# Wisconsin State Patrol

## District Map

Go to: [Wisconsin State Patrol Home](#)

### Spooner Post

Capt. Craig Larson, Commander  
Lt. Timothy Weilberg, Executive Officer  
W7102 Green Valley Rd.  
Spooner, WI 54801  
Telephone (715) 635-2141  
Fax (715) 635-6373

### Eau Claire Post

Capt. Craig Larson, Commander  
Lt. Dean Haigh, Executive Officer  
5005 U.S. Highway 53  
Eau Claire, WI 54701-8846  
Telephone (715) 839-3800  
Fax (715) 839-3841

### Wisconsin State Patrol Academy

Capt. Les Misna, Director of Training  
Lt. Frank C. Hefti, Executive Officer  
95 S. 10<sup>th</sup> Ave.  
Ft. McCoy, WI 54656-5168  
Telephone (608) 366-3307  
Fax (608) 269-5681

### Tomah Post

Capt. Jason L. Zeeh, Commander  
Lt. Jeremy T. Foster, Executive Officer  
(I-90, Tomah Exit Hwy. 131)  
23928 Lester McMullen Dr.  
Tomah, WI 54660-5376  
Telephone (608) 374-0513  
Fax (608) 846-8536

### DeForest Post

Capt. Jason L. Zeeh, Commander  
Lt. Edward Witkiewicz, Executive Officer  
911 W North St.  
DeForest, WI 53532-1971  
Telephone (608) 846-8500  
Fax (608) 846-8536

### Division Headquarters

Anthony Burrell, Superintendent  
Timothy Camahan, Colonel  
4822 Madison Yards Way, 9<sup>th</sup> Floor South  
Madison, WI 53705  
Telephone 1-844-847-1234  
Fax (608) 267-4495

### Wausau Post

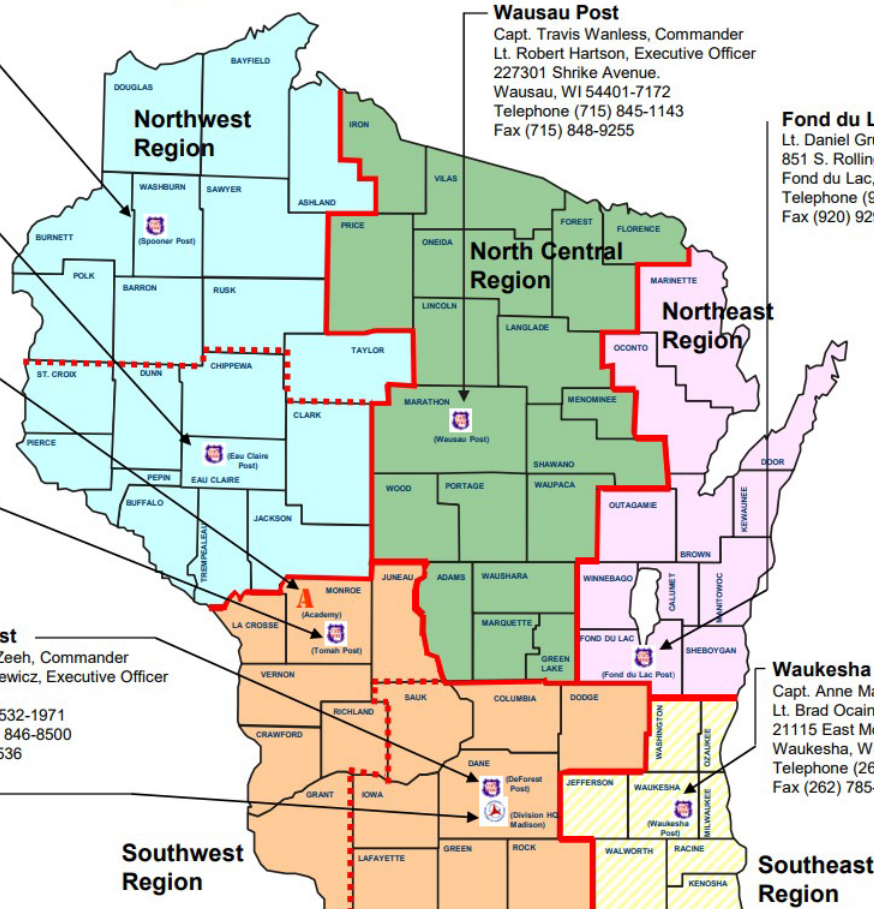
Capt. Travis Wanless, Commander  
Lt. Robert Hartson, Executive Officer  
227301 Shrike Avenue.  
Wausau, WI 54401-7172  
Telephone (715) 845-1143  
Fax (715) 848-9255

### Fond du Lac Post

Lt. Daniel Gruebele, Executive Officer  
851 S. Rolling Meadows Dr.  
Fond du Lac, WI 54937-9902  
Telephone (920) 929-3700  
Fax (920) 929-7666

### Waukesha Post

Capt. Anne Maxson, Commander  
Lt. Brad Ocain, Executive Officer  
21115 East Moreland Blvd.  
Waukesha, WI 53186-2985  
Telephone (262) 785-4700  
Fax (262) 785-4722



Rev. 9/9/2021



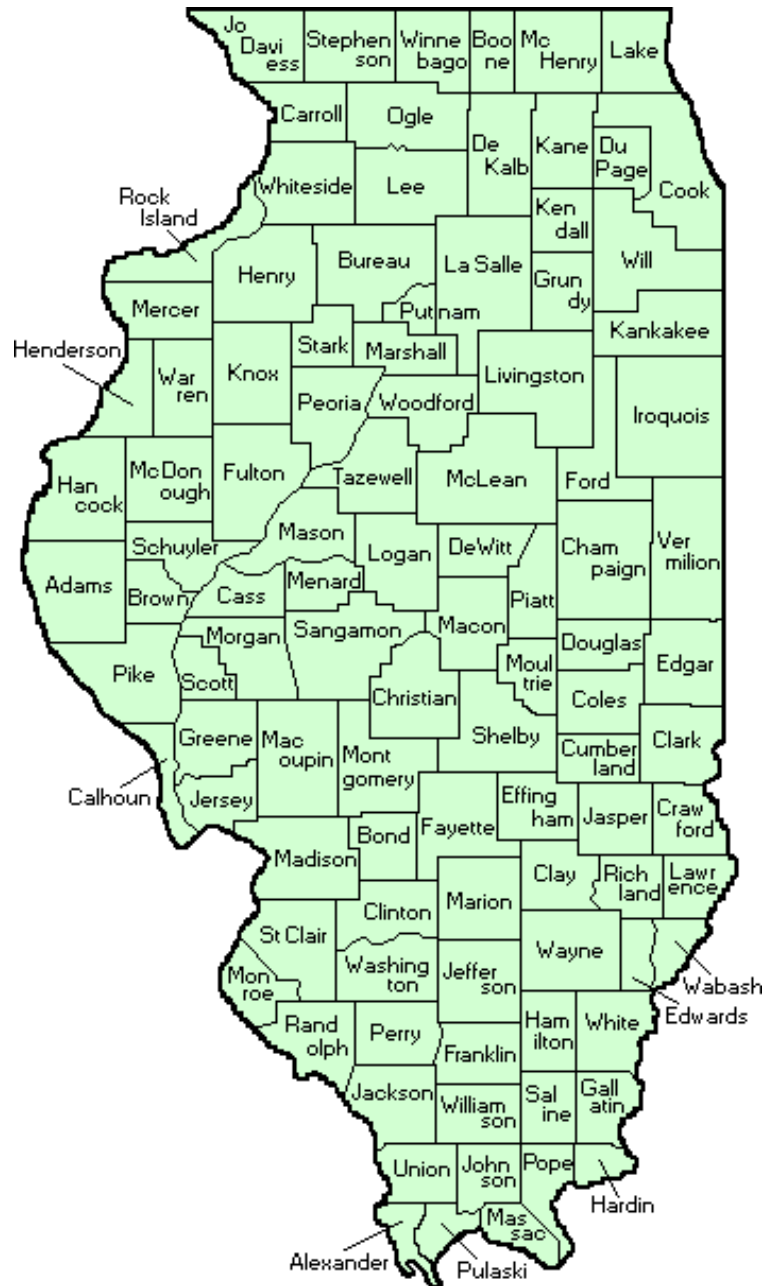
# ILLINOIS STATE POLICE DISTRICTS, LOCATION OF HEADQUARTER POSTS AND COUNTIES SERVED

<b>District 1</b>	Sterling	3107 E. Lincolnway Sterling, Illinois Telephone: (815) 632-4010	Carroll Lee Ogle Whiteside
<b>District 2</b>	Elgin	777 S. State St. Elgin, Illinois Telephone:(847) 931-2405	DeKalb DuPage Kane Lake McHenry
<b>District Chicago</b>	Des Plaines	9511 W. Harrison St. Des Plaines, Illinois Telephone: (847) 294-4400	Cook
<b>District 5</b>	Lockport	16648 S. Broadway Lockport, Illinois Telephone: (815) 726 6377	Grundy Kendall Will
<b>District 6</b>	Pontiac	800 Old Airport Road Pontiac, Illinois Telephone: (815) 844-1500	De Witt Livingston McLean
<b>District 7</b>	East Moline	800 Hillcrest Rd. East Moline, Illinois Telephone: (309) 752-4915	Henry Knox Mercer Rock Island
<b>District 8</b>	Metamora	1265 Lourdes Rd. Metamora, Illinois Telephone: (309) 383-2133	Marshall Peoria Stark Tazewell Woodford
<b>District 9</b>	Springfield	801 South 7th Street, Suite 100-M Springfield, Illinois Telephone: (217) 786-7107	Cass Christian Logan Mason Menard Morgan Sangamon
<b>District 10</b>	Pesotum	P.O. Box 110 Pesotum, Illinois Telephone: (217) 867-2050	Champaign Coles Douglas Edgar Macon Moultrie Piatt Shelby Vermilion
<b>District 11</b>	Collinsville	1100 Eastport Plaza Dr. Collinsville, Illinois Telephone: (618) 346-3990	Bond Clinton Madison Monroe St. Clair
<b>District 12</b>	Effingham	401 Industrial Ave., Suite A Effingham, Illinois Telephone: (217) 347-2711	Clark Clay Crawford Cumberland Effingham Fayette Jasper Lawrence Marion Richland
<b>District 13</b>	DuQuoin	1391 S. Washington Street DuQuoin, Illinois Telephone: (618) 542 -2171	Franklin Jackson Jefferson Perry Randolph Washington Williamson
<b>District 14</b>	Macomb	1600 North Lafayette Street Macomb, Illinois Telephone: (309) 833-4046	Fulton Hancock Henderson McDonough Warren
<b>District 15</b>	Oak Brook	2700 Ogden Ave. Downers Grove, Illinois Telephone: (630) 241-6800 Ext. 5030	Tollway
<b>District 16</b>	Pecatonica	16450 West State Rd. Pecatonica, Illinois Telephone: (815) 239-1152	Boone Jo Daviess Stephenson Winnebago
<b>District 17</b>	LaSalle	2971 E. 350th Road La Salle, Illinois Telephone: (815) 224-1171	Bureau La Salle Putnam
<b>District 18</b>	Litchfield	102 Illinois Route 16 Litchfield, Illinois Telephone: (217) 324-4900	Calhoun Greene Jersey Macoupin Montgomery
<b>District 19</b>	Carmi	919 Illinois Route 14 Carmi, Illinois Telephone: (618) 382-4606	Edwards Gallatin Hamilton Saline Wabash Wayne White

<b>District 20</b>	Pittsfield	P.O. Box 32 Pittsfield, Illinois Telephone: (217) 285-2034	Adams Brown Pike Schuyler Scott
<b>District 21</b>	Ashkum	P.O. Box 147 Ashkum, Illinois Telephone: (815) 698-2395	Ford Iroquois Kankakee
<b>District 22</b>	Ullin	1154 Shawnee College Rd. Ullin, Illinois Telephone: (618) 845-3740	Alexander Hardin Johnson Massac Pope Pulaski Union

# Illinois Sheriffs' Departments

Go to [Sheriffs' Directory – Illinois Sheriffs' Association \(ilsheriff.org\)](http://ilsheriff.org) for interactive map



## **ILLINOIS SHERIFFS' DEPARTMENTS**

Adams County  
521 Vermont Street  
Quincy, IL 62301  
(217) 277-2206

Alexander County  
2000 Washington Ave.  
Cairo, IL 62914  
(618) 734-2141

Bond County  
403 South Second Street  
Greenville, IL 62246  
(618) 664-4689

Boone County  
615 North Main Street  
Belvidere, IL 61008  
(815) 544-9322

Brown County  
200 E. Court, Room #1  
Mt. Sterling, IL 62353  
(217) 773-2011

Bureau County  
700 S. Main Street  
Princeton, IL 61356  
(815) 857-3344

Calhoun County  
Box 635  
Hardin, IL 62047  
(618) 576-9041

Carroll County  
301 N. Main Street  
Mt. Carroll, IL 61053  
(815) 244-9171

Cass County  
101 N. Front Street  
Virginia, IL 62691  
(217) 452-7718

Champaign County  
204 East Main Street  
Urbana, IL 61801  
(217) 384-1205

Christian County  
301 W. Franklin Street  
Taylorsville, IL 62568  
(217) 824-4961

Clark County  
207 N. Fifth Street  
Marshall, IL 62441  
(217) 826-6393

Clinton County  
810 Franklin Street  
Carlyle, IL 62231  
(618) 594-4555

Coles County  
701 7<sup>th</sup> Street  
Charleston, IL 61920  
(217) 348-0585

Cook County  
50 W. Washington  
Chicago, IL 60602  
(773) 674-7710

Crawford County  
203 South Jefferson  
Robinson, IL 62454  
(618) 546-1515

Cumberland County  
166 Courthouse Square  
Toledo, IL 62468  
(217) 849-2471

DeKalb County  
150 N. Main Street  
Sycamore, IL 61078  
(815) 895-7260

DeWitt County  
101 W. Washington  
Street Clinton, IL 61727  
(217) 935-9507

Douglas County  
920 South Washington  
Tuscola, IL 61953  
(217) 253-2913

DuPage County  
501 N. County Farm Road  
Wheaton, IL 60187  
(630) 407-2000

Edgar County  
228 North Central  
Paris, IL 61944  
(217) 465-4166

Edwards County  
50 Main Street  
Albion, IL 62806  
(618) 445-2721

Effingham County  
101 N. 4<sup>th</sup> Street  
Effingham, IL 62401  
(217) 342-8463

Fayette County  
221 South 7<sup>th</sup> Street  
Vandalia, IL 62471  
(618) 283-2141

Ford County  
235 N. American Street  
Paxton, IL 60957  
(217) 379-2324

Franklin County  
403 East Main Street  
Benton, IL 62812  
(618) 438-8211

Fulton County  
268 W. Washington  
Lewistown, IL 61542  
(309) 547-2277

Gallatin County  
P.O. Box 340  
Shawneetown, IL 62984  
(618) 269-3137

Greene County  
403 7<sup>th</sup> Street  
Carrollton, IL 62016  
(217) 942-6901

Grundy County  
111 East Illinois Ave.  
Morris, IL 60450  
(815) 942-6645

Hamilton County  
100 S. Jackson Street  
McLeansboro, IL 62859  
(618) 643-2511

Hancock County  
98 Buchanan Street  
Carthage, IL 62321  
(217) 357-2115

Hardin County  
1 Courthouse Hill  
Elizabethtown, IL 62931  
(618) 287-2271

Henderson County  
P.O. Box 228  
Oquawka, IL 61469  
(309) 867-4291

Henry County  
311 West Center Street  
Cambridge, IL 61238  
(309) 937-3911

Iroquois County  
550 S. 10<sup>th</sup> Street  
Watseka, IL 60970  
(815) 432-6992

Jackson County  
1001 Mulberry Street  
Murphysboro, IL 62966  
(618) 687-3822

Jasper County  
106 East Morgan  
Newton, IL 62448  
(618) 783-8477

Jefferson County  
911 Casey Ave.  
Mt. Vernon, IL 62864  
(618) 244-8004

Jersey County  
114 N. Washington St.  
Jerseyville, IL 62052  
(618) 498-6881

JoDaviess County  
330 N. Bench Street  
Galena, IL 61036  
(815) 777-2141



Johnson County  
P.O. Box 546  
Vienna, IL 62995  
(618) 658-8264

Kane County  
37W755 IL Rt. 38  
St. Charles, IL 60175  
(630) 208-2000

Kankakee County  
3000 S. Justice Way  
Kankakee, IL 60901  
(815) 802-7100

Kendall County  
1102 Cornell Lane  
Yorkville, IL 60560  
(630) 553-7500

Knox County  
152 S. Kellogg Street  
Galesburg, IL 61401  
(309) 345-3733

Lake County  
25 S. Martin Luther King, Jr. Ave.  
Waukegan, IL 60085  
(847) 377-4050

LaSalle County  
707 Etna Road  
Ottawa, IL 61350  
(815) 433-2161

Lawrence County  
1306 Lexington  
Lawrenceville, IL 62439  
(618) 943-8094

Lee County  
240 E. Progress Street  
Dixon, IL 61021  
(815) 284-5217

Livingston County  
112 W. Lincoln Street  
Pontiac, IL 61764  
(815) 844-2774

Logan County  
601 Broadway  
Lincoln, IL 62656  
(217) 732-2156

Macon County  
333 S. Franklin Street  
Decatur, IL 62523  
(217) 424-1332

Macoupin County  
215 S. East Street  
Carlinville, IL 62626  
(217) 854-3135

Madison County  
405 Randle Street  
Edwardsville, IL 62025  
(618) 692-6087

Marion County  
204 N. Washington  
Salem, IL 62881  
(618) 548-2141

Marshall County  
520 6<sup>th</sup> Street  
Lacon, IL 61540  
(309) 246-2115

Mason County  
102 W. Market Street  
Havana, IL 62644  
(309) 543-2231

Massac County  
519 Market Street  
Metropolis, IL 62960  
(618) 524-2912

McDonough County  
110 S. McArthur St.  
Macomb, IL 61455  
(309) 833-2323

McHenry County  
2200 N. Seminary Ave.  
Woodstock, IL 60098  
(815) 338-4715

McLean County  
104 W. Front Street  
Bloomington, IL 61702  
(309) 888-5034

Menard County  
315 South 6<sup>th</sup> Street  
Petersburg, IL 62675  
(217) 632-2273

Mercer County  
906 S.W. Third Street  
Aledo, IL 61231  
(309) 582-5194

Monroe County  
225 East Third Street  
Waterloo, IL 62298  
(618) 939-8651

Montgomery County  
140 N. Main  
Hillsboro, IL 62049  
(217) 532-9511

Morgan County  
300 West Court  
Jacksonville, IL 62650  
(217) 245-4143

Moultrie County  
1505 W. Hagerman Rd.  
Sullivan, IL 61951  
(217) 728-4386

Ogle County  
202 S. 1<sup>st</sup> Street  
Oregon, IL 61061  
(815) 732-6666

Peoria County  
301 N. Maxwell Road  
Peoria, IL 61604  
(309) 607-7858

Perry County  
12 E. Water Street  
Pinckneyville, IL 62274  
(618) 357-5212

Piatt County  
1216 Raymond Rd.  
Monticello, IL 61856  
(217) 762-7822

Pike County  
204 East Adams St.  
Pittsfield, IL 62363  
(217) 285-0511

Pope County  
216 E. Decatur Street  
Golconda, IL 62938  
(618) 683-4321

Pulaski County  
500 Illinois Ave.  
Mound City, IL 62963  
(618) 748-9374

Putnam County  
120 North 4<sup>th</sup> Street  
Hennepin, IL 61327  
(815) 925-7084

Randolph County  
200 West Buena Vista  
Chester, IL 62233  
(618) 826-5484

Richland County  
211 West Market Street  
Olney, IL 62450  
(618) 395-7481

Rock Island County  
1317 3<sup>rd</sup> Avenue  
Rock Island, IL 61201  
(309) 558-3456

Saline County  
1 N. Main Street  
Harrisburg, IL 62946  
(618) 252-8661

Sangamon County  
1 Sheriff's Plaza  
Springfield, IL 62701  
(217) 753-6855

Schuyler County  
216 W. Lafayette  
Rushville, IL 62681  
(217) 322-4366

Scott County  
101 E. Market Street  
Winchester, IL 62694  
(217) 742-3141

Shelby County  
151 N. Morgan Street  
Shelbyville, IL 62565  
(217) 774-3941

St. Clair County  
700 North 5<sup>th</sup> Street  
Belleville, IL 62220  
(618) 277-3505

Stark County  
130 W. Jefferson  
Toulon, IL 61483  
(309) 286-2541

Stephenson County  
15 N. Galena Ave.  
Freeport, IL 61032  
(815) 235-8290

Tazewell County  
101 S. Capitol  
Pekin, IL 61554  
(309) 478-5607

Union County  
309 West Market Street  
Jonesboro, IL 62952  
(618) 833-5500

Vermilion County  
2 E. South Street  
Danville, IL 61832  
(217) 442-4080

Wabash County  
120 E. 4th Street  
Mt. Carmel, IL 62863  
(618) 262-2706

Warren County  
121 N. "A" Street  
Monmouth, IL 61462  
(309) 734-8505

Washington County  
245 N. Kaskaskia Street  
Nashville, IL 62263  
(618) 327-8273

Wayne County  
305 E. Court Street  
Fairfield, IL 62837  
(618) 842-663

White County  
108 North Main Cross  
Carmi, IL 62821  
(618) 382-5321

Whiteside County  
400 N. Cherry Street  
Morrison, IL 61270  
(815) 772-4044

Will County  
16911 West Laraway Rd.  
Joliet, IL 60433  
(815) 727-8798

Williamson County  
200 West Jefferson St.  
Marion, IL 62759  
(618) 997-6541

Winnebago County  
420 West State Street  
Rockford, IL 61101  
(815) 987-5426

Woodford County  
111 East Court Street  
Eureka, IL 61530  
(309) 467-2375

## EXPERTS/CONSULTANTS

*For more information, click on the company name to  
be directed to their website*

### **CATASTROPHE RESPONSE /THIRD PARTY ADMINISTRATORS**

#### [Chicago Midwest Claims, Inc.](#)

*An Independent Adjusting Company*  
19730 Governor Hwy, Ste 3  
Flossmoor, IL 60422  
Office: (708) 798-8970  
Fax: (708) 798-8975

#### [Crawford & Company](#)

*Third Party Administration*  
1900 E. Golf Road  
Schaumburg, IL 60173  
Office: (847) 517-4175  
Toll Free: (877) 346-0300  
Transportation Claims: (866) 420-1689

### **ACCIDENT RECONSTRUCTIONISTS**

#### [Foresight Reconstruction, Inc.](#)

*Research and Consulting*  
5901 Lincoln Ave.  
Morton Grove, IL 60053  
Office: (312) 322-4600  
Fax: (312) 322-4601

#### [Engineering Systems Inc.](#)

*Engineering and Scientific Investigation & Analysis*  
4215 Campus Dr.  
Aurora, IL 60504  
Office: (630) 851-4566  
Fax: (630) 851-4870

#### [Exponent, Inc.](#)

*Engineering & Scientific Consulting*  
525 W. Monroe St., Suite 1050  
Chicago, IL 60661  
Office: (312) 999-4200

### **FIRE EXPLOSION CAUSATION & ORIGIN ENGINEERS**

#### [SEA, Ltd.](#)

*Forensic Engineering Services*  
5600 Apollo Dr., Suite 100  
Rolling Meadows, IL 60008  
Toll Free: (888) 597-5084

#### [Engineering Systems Inc.](#)

*Engineering and Scientific Investigation & Analysis*  
4215 Campus Dr.  
Aurora, IL 60504  
Office: (630) 851-4566  
Fax: (630) 851-4870

### **ELECTRICAL CAUSATION ORIGIN & ELECTRICAL ENGINEERS**

#### [SEA, Ltd.](#)

*Forensic Engineering Services*  
5600 Apollo Dr., Suite 100  
Rolling Meadows, IL 60008  
Toll Free: (888) 597-5084

### **TOXICOLOGISTS**

Jerrold B. Leikin, M.D.  
*Director of Medical Toxicology*  
2150 Pfingsten Rd, Suite 3000  
Glenview, IL 60026  
Office: (847) 657-1700

### **CARGO THEFT INVESTIGATIONS**

#### [CargoNet](#)

*Theft Prevention & Recovery Solutions*  
545 Washington Blvd.  
Jersey City, NJ 07310  
(888) 595-2638

### **HAZMAT CLEAN-UP**

#### [Spill Center](#)

1 Cabot Rd., Suite 200  
Hudson, MA 01749  
(978) 568-1922  
24 Hrs. (800) 456-9038  
Fax: (978) 568-1945

### **INTERPRETERS**

#### [Interprenet](#)

27 N. Wacker Drive, Suite 270  
Chicago, IL 60606  
Office: (312) 928-1188

### **TRAFFIC CRASH INVESTIGATION and SAFETY ENGINEERING**

#### [Northwestern Center for Public Safety](#)

*Courses and programs for law enforcement, crash investigators, traffic  
engineers, and other public safety professionals*  
405 Church Street  
Evanston, IL 60201  
Office: (847) 491-5476  
Toll Free: (800) 323-4011

# INVESTIGATION CHECKLIST

## Major Accidents Involving Commercial Motor Vehicles

**FORESIGHT reconstruction, inc.®** developed this checklist to provide guidance to those responsible for managing first response investigations of major accidents involving commercial motor vehicles. **REPORTS & RECORDS** are obtained from several sources including police, drivers, motor carriers, newspapers, TV, EMS and others. For major accidents, the prompt assistance of an accident reconstruction specialist is usually warranted to conduct inspections of the **ACCIDENT SITE** and **VEHICLES**, to lead the preliminary accident analysis, to assess the need for continued investigation and to prepare for reconstruction analysis if and when requested.

**IMPORTANT:** While this checklist is comprehensive, it is neither exhaustive nor intended to be a standard investigation protocol. Since every accident is unique, some items will apply, some will not, some may not be on this list and some may remain unknown until additional information becomes available. Some items may not be current (i.e. advances in electronic data recorder technology). Although investigations should be expedited, postponing certain activities until additional information becomes available and/or other concerned parties are present may be appropriate. **AVOID SPOILIATION / DESTRUCTIVE TESTING.**

### REPORTS & RECORDS:

- ☐ **Photographs & statements taken by attorneys or claims investigators;** Respect attorney-client and work-product privileges.
- ☐ **Police report;** supplemental reports; photographs; videotape; field notes; accident reconstruction report; total station surveys.
- ☐ **Electronic data from all vehicles extracted by police or any other parties;** ECM, SDM and/or ABS.
- ☐ **DOT Commercial Driver/Vehicle Inspection report** (49CFR396.9).
- ☐ **State traffic citations and DOT Federal Motor Carrier Safety Regulation (FMCSR) violations.**
- ☐ **Driver's drug & alcohol test results** (49CFR392.4 and 392.5).
- ☐ **Driver's Commercial Driver's License (CDL).**
- ☐ **Weight scale ticket and bill of lading.**
- ☐ **Driver's record of duty status;** log book (49CFR395.8).
- ☐ **Recent Qualcomm satellite system data reports.**
- ☐ **Motor carrier's dispatch log.**
- ☐ **Towing/wrecker/recovery service** receipts & photographs tow truck driver may have taken.
- ☐ **Newspaper & TV station photographs & videotape** (surface and aerial photos).
- ☐ **Coroner's report and photographs.**
- ☐ **EMS & emergency room reports** re: injuries, witness statements & evidence of seat belt usage.
- ☐ **Recent driver post-trip vehicle inspection reports** (49CFR396.11).
- ☐ **Periodic (annual) inspection report;** Minimum Periodic Inspection Standards (49CFR396.17 & Appendix G).
- ☐ **Recent inspection, repair & maintenance records including random roadside inspection** (49CFR396.3).
- ☐ **Description / color of clothing & shoes for nighttime pedestrian accidents;** Preserve clothing and shoes.
- ☐ **Driver's cell phone records from time of accident may need to eventually be obtained.**

### ACCIDENT SITE:

- ☐ **Locate accident site;** Closest street address, intersections, overpasses, exit numbers, land marks, mile markers, GPS, etc; See mapquest.com, maps.google.com, maps.live.com, terraserver.com, terraserver-usa.com, etc. for maps and aerial photographs.
- ☐ **Retain aerial photographs to be used for locating the vertical and oblique photographs of crash site and close-ups of evidence: 2<sup>nd</sup> choice: "aerial surveyor" with 9" x 9" film or digital mapping camera in belly of airplane; 1000' AGL min; These are high resolution and excellent for scaling and zooming in on details; Best for verticals but useful oblique views are difficult to photograph with this method. 3<sup>rd</sup> choice: aerial photographer with professional camera equipment from side window of airplane; 1000' AGL min; Last choice because close-ups and true vertical photographs needed for scaling cannot be obtained through the side window of an airplane at 1000' AGL; However, this service is the least expensive and most commonly available on short notice.**
- ☐ **Inspect & photograph accident site ASAP, before evidence weathers away under rain, snow and traffic (Within a day or two when possible - Not weeks!)** Accident reconstructionist or experienced vehicle accident investigator should know what to look for and photograph or videotape; Use professional camera equipment.
- ☐ **Apply scale marks along shoulders or foglines with WHITE striping paint** every 100', 50' or 25' as needed in each relevant direction for scaling of aerial photographs; Make scale marks about 5" x 15" with inverted spray can striping paint.
- ☐ **Mark location of inconspicuous evidence with striping paint** to enhance location in aerial photographs.
- ☐ **Map accident site with survey equipment or manually with measuring wheel & tape** in lieu of aerial photography; Required in addition to aerial photography if road or off-road elevation measurements are relevant to accident analysis.
- ☐ **Videotape and/or photograph while driving toward area of impact** for each relevant direction during similar visibility conditions; Photograph speed limit and advisory speed signs and other advance signage on the approaches.
- ☐ **Evaluate visibility for twilight/nighttime accidents** before natural & artificial lighting has changed; Request authorities or others to participate in evaluation; Photographs taken to record visibility for evidentiary purposes must be taken by qualified photographer.
- ☐ **Videotape traffic signal sequencing & timing;** Simultaneous recording of both relevant directions with the same camera is useful.
- ☐ **Videotape and/or photograph ASAP advance construction zone traffic control devices & signage** before they are moved.
- ☐ **Videotape and/or photograph any relevant line-of-sight obstructions** such as hills, curves, buildings, signs and especially parked vehicles, trees, bushes and other foliage before they change; Measure location and height of camera lens.
- ☐ **Search for, measure & photograph potentially related potholes, shoulder drop-offs, loose gravel and bumps.**



## VEHICLES:

- ☐ **Locate all involved vehicles:** Identify contact person/phone number & obtain permission for inspections.
- ☐ **Identify involved vehicles** make, model, year, color, fleet number, engine manufacture & salvage yard stock number.
- ☐ **Driveable tractors should not be driven; DO NOT** start engine or drive tractor after the accident until ECM has been downloaded; Driving will delete last stop and may delete hard stop records; If tractor is still at the accident scene and police permit, remove key, remove drive shafts, release parking spring brakes with external air or caging (**DO NOT back off slack adjusters on tractor or trailer**), then tow to off-road location for downloading.
- ☐ **Move client's vehicle to secure location until inspections have been completed.**
- ☐ **Tag vehicles "Out of Service";** Vehicles must be stored and preserved for a reasonable length of time to give all parties an opportunity to inspect and agree to release.
- ☐ **Vehicles MUST NOT be repaired or have parts removed or adjusted; AVOID SPOILIATION / DESTRUCTIVE TESTING.**
- ☐ **"BLACK BOX" downloading including ECM's, SDM's, ABS, etc.:** **DO NOT** download data recorder from other party's vehicle without owner's permission; Depending on accident damage, data recorder may need to be removed, preserved & downloaded on a later date; Photograph or videotape download and removal; Obtain both hardcopy and CD or other electronic record of extracted data; Note: Downloading after removal may cause the disconnected sensor circuits to appear as false fault codes.
- ☐ **Download Truck Engine ECM (Electronic Control Module, "Black Box") by accident reconstructionist or qualified local dealer technician:** Record odometer mileage to compare with ECM mileage; Record local time corresponding to ECM clock at time of download; Record drive axle tire sizes and differential ratio displayed on tire sidewalls and differential housing.
  - Detroit Diesel** DDEC IV & V have "last stop" and 2 last "hard brake" records since 1997; Extract from Deutsch connector in cab.
  - Caterpillar** has 2 last "quick stop" records since 1996; Quick stop record feature: disabled is factory standard; enabled is optional; Extract from Deutsch connector in cab.
  - Mack** has 2 last "vehicle incident reports" since 1997 on some models and 2000 on all models; Engine ECU and Vehicle ECU must be removed and shipped to Mack Truck for download.
  - Cummins** ISX engines record 3 sudden deceleration records since 2005, download with Cummins "PowerSpec" & "INSITE" software; also, dash option called RoadRelay III and IV (not a common option) records incident data since 1995; May have up to 5 sudden deceleration records; **DO NOT** remove RoadRelay from tractor; Download with Cummins "Inform" software.
  - Mercedes Benz** same as Detroit except Mercedes has two-piece system; Engine PLD & in cab DCU since 2002.
  - Volvo** engine electronic control units do not record incident data per Volvo Trucks North America, Aug, 2005.
- ☐ **Download Airbag Control Module from passenger vehicles for velocity & braking data;** Check boschdiagnostics.com for list of vehicles supported by Crash Data Retrieval System (CDR); GM since late 1990's, Ford since early 2000's & Chrysler since 2005; Most Japanese and European modules are not currently downloadable by independents; Consider removing and preserving module before vehicle is repaired or salvaged.
- ☐ **Download ABS Control Module** fault codes with ABS diagnostic software (e.g. Bendix ACom, Meritor Toolbox, LINK-Radlinski); ABS req'd. on truck tractors mfd. since March, 1997 and on other air braked CMV's mfd. since March, 1998 (49CFR393.55).
- ☐ **Download Eaton VORAD (Vehicle On-board Radar);** Optional system may have incident records; VORAD control module must be returned to Eaton for download; VORAD is not a common option.
- ☐ **Inspect and photograph all involved vehicles;** Accident reconstructionist should know what to look for and photograph.
- ☐ **Search interior of vehicles for alcoholic beverage containers, drugs and cell phones;** photograph in situ.
- ☐ **Measure tractor/trailer overall length, overall width, axle spacing** and other potentially relevant dimensions.
- ☐ **Measure impact crush damage of passenger cars, vans, pickups** for EDSMAC, EDCRASH or other speed analysis.
- ☐ **Determine if drivers claim mechanical problems;** Visually inspect vehicles for any claimed defects; A more comprehensive inspection with testing and disassembly may be required at later date with all parties present.
- ☐ **Test function of air brake system & measure stroke;** Review DOT brake inspection results when available; Do not start engine for testing until after ECM has been downloaded; Mechanic & parts may be needed to repair accident damaged air brake system for testing; If pre-accident damage is found, **DO NOT REPAIR** for testing; To charge air reservoirs, start engine or use an external air supply; Air pressure = 80 to 90 psi **with brakes applied** for stroke measurements (See 49CFR Appendix G to Subchapter B and CVSA North American Standard Out of Service Criteria); Record application pressure at time of stroke measurements; AVOID SPOILIATION / DESTRUCTIVE TESTING.
- ☐ **Determine air chamber type/size; std. stroke or long stroke (L); manual or automatic slack adjusters;** automatic brake slack adjusters and under-adjustment indicators required on air braked CMV's mfd. since Oct, 1994 (49CFR393.53).
- ☐ **Measure & photograph abnormal tractor & trailer brake lining thickness** and cracks or missing sections around inboard edges.
- ☐ **Photograph any visible abnormal brake drum condition** such as oil, rust or cracks.
- ☐ **Record transmission manufacture, model, automatic or manual** and number of forward speeds.
- ☐ **Photograph tread pattern width and condition of all tires;** Measure tire pressure and tread depth if potentially relevant to accident.
- ☐ **Photograph cargo, dunnage & tie down devices** especially for truck rollover accidents; Record rating/capacity and condition of securement systems including steel strapping, chains, hooks, load binders, cables, webbing, cordage, front-end structures, etc.
- ☐ **Thoroughly examine vehicle for subtle dents, cracks in plastic or glass & trace blood, hair, fabric, scratches and smears in road film, etc.** around and under vehicle for pedestrian accidents.
- ☐ **Inspect and photograph lamps on client's vehicle;** Condition of lamp filaments within or proximate to collision damaged area may indicate whether they were "on" or "off" at the time of impact; Close-up photography is required; **DO NOT** turn on power to test lamp circuits; Depending on damage, power may alter post-impact condition of filaments, wiring and fuses; Operation of light circuits for testing may be considered only if their condition will not be altered; Accident reconstructionist must advise as to what is appropriate for each specific case; Consider testing with other parties present and in agreement; AVOID SPOILIATION / DESTRUCTIVE TESTING.
- ☐ **Inspect and photograph lamps in other parties vehicles; DO NOT** test or remove without owner's permission.
- ☐ **Remove and preserve relevant lamps from client's vehicle;** Request participation of other interested parties; Mark location of lamps and photograph before removal; Do not clean dirt off glass bulbs or lens; Exposed lamp filaments are fragile and must be carefully removed and protected; Accident reconstructionist should do this ASAP to avoid additional exposure to weathering and handling; Sealed lamp modules should be opened with other parties present; AVOID SPOILIATION / DESTRUCTIVE TESTING.



# Event Data Recorder Supported Vehicles

Click here for most up to date search:

[EDR Supported Vehicle Lookup | EDR Vehicle Lookup \(edrsupportedvehicles.com\)](http://EDR Supported Vehicle Lookup | EDR Vehicle Lookup (edrsupportedvehicles.com))

## SUPPORTED COMMERCIAL VEHICLE ENGINES

1997-2020 Detroit Diesel  
2000-2020 Mercedes Benz  
1997-2010 Caterpillar  
1999-2020 Cummins  
2010-2020 International  
1998-2020 Mack  
2010-2020 PACCAR  
2006-2020 Volvo

## Alfa Romeo

2015-2021 Alfa Romeo 4C  
2017-2021 Alfa Giulia  
2018-2021 Alfa Stelvio

## SUPPORTED AUDI VEHICLES

### Audi

2019-2021 Audi A1  
2015-2021 Audi A3  
2015-2021 Audi A4  
2015-2021 Audi A5  
2015-2021 Audi A6  
2015-2021 Audi A7  
2015-2021 Audi A8  
2019-2021 Audi e-tron  
2017-2021 Audi R8  
2018-2021 Audi RS3  
2015-2017 Audi RS5  
2019-2021 Audi RS5  
2015-2021 Audi RS7  
2015-2021 Audi S3  
2017-2021 Audi S4  
2015-2021 Audi S5  
2015-2021 Audi S6  
2015-2021 Audi S7  
2015-2021 Audi S8  
2018-2021 Audi Q2  
2015-2021 Audi Q3  
2017-2021 Audi Q5, SQ5  
2017-2021 Audi Q7  
2018-2021 Audi Q8

## SUPPORTED BENTLEY VEHICLES

### Bentley

2016-2021 Bentley Continental  
2016-2021 Bentley Flying Spur  
2016-2018 Bentley Mulsanne  
2017-2021 Bentley Bentayga

## SUPPORTED BMW VEHICLES

### BMW

2014-2021 BMW 2 Series  
2013-2021 BMW 3 Series  
2014-2021 BMW 4 Series  
2013-2021 BMW 5 Series  
2013-2020 BMW 6 Series  
2013-2021 BMW 7 Series  
2019-2021 BMW 8 Series  
2015-2018 BMW Alpina B6  
2014 BMW Alpina B7  
2017-2018 BMW Alpina B7  
2014-2021 BMW i3  
2014-2020 BMW i8  
2015-2018 BMW M3  
2015-2018 BMW M4  
2013-2018 BMW M5  
2013-2017 BMW M6  
2015-2021 BMW X1  
2018-2021 BMW X2  
2013-2021 BMW X3  
2015-2021 BMW X4  
2014-2018 BMW X5  
2020-2021 BMW X5  
2015-2019 BMW X6  
2021 BMW X6  
2019-2021 BMW X7  
2015-2016 BMW Z4  
2019-2021 BMW Z4

## SUPPORTED CHRYSLER VEHICLES

### Chrysler

2011-2017 Chrysler 200  
2006-2021 Chrysler 300  
2007-2009 Chrysler Aspen  
2009-2010 Chrysler Cirrus  
2021 Chrysler Grand Caravan  
2008-2011 Chrysler Grand Voyager  
2007-2008 Chrysler Pacifica  
2017-2021 Chrysler Pacifica  
2007-2010 Chrysler PT Cruiser

2007-2010 Chrysler Sebring  
2008-2016 Chrysler Town & Country  
2020-2021 Chrysler Voyager

## Dodge

2008-2014 Dodge Avenger  
2007-2012 Dodge Caliber  
2008-2020 Dodge Caravan/Grand Caravan  
2008-2021 Dodge Challenger  
2006-2021 Dodge Charger  
2007-2011 Dodge Dakota  
2012 Dodge Dakota (Mexico)  
2013-2016 Dodge Dart  
2005-2009 Dodge Durango  
2011-2021 Dodge Durango  
2009-2020 Dodge Journey  
2006-2008 Dodge Magnum  
2007-2012 Dodge Nitro  
2006-2009 Dodge Ram 1500, 2500, 3500, 4000, 4500, 5500 (includes incomplete/cab & chassis)  
2013-2017 Dodge Viper

## Jeep

2006-2010 Jeep Commander  
2007-2020 Jeep Compass  
2006-2021 Jeep Grand Cherokee  
2008-2013 Jeep Liberty/Cherokee  
2014-2021 Jeep Cherokee  
2020-2021 Jeep Gladiator  
2007-2017 Jeep Patriot  
2015-2021 Jeep Renegade  
2007-2021 Jeep Wrangler

## Ram

2020 Ram 1500  
2010-2021 Ram 1500, 2500, 3500, 4000, 4500, 5500 (includes incomplete/cab & chassis)  
2012-2015 Ram Cargo Van  
2014-2020 Ram ProMaster  
2015-2021 Ram ProMaster City

## SUPPORTED FIAT VEHICLES

### Fiat

2017-2019 Fiat 124 Spider  
2012-2019 Fiat 500  
2014-2020 Fiat 500L  
2016-2021 Fiat 500X  
2011-2017 Fiat Freemont

### Lancia

2012-2013 Lancia Flavia  
2012-2015 Lancia Grand Voyager  
2012-2014 Lancia Thema

## SUPPORTED FORD VEHICLES

### Ford

2005-2007 Ford 500  
2001-2011 Ford Crown Victoria  
2013-2018 Ford C-Max  
2005-2021 Ford Econoline  
2018-2021 Ford EcoSport  
2007-2020 Ford Edge  
2001-2004 Ford Escape  
2009-2021 Ford Escape  
2001-2002 Ford Escort  
2018 Ford Escort  
2001-2005 Ford Excursion  
2001-2002 Ford Expedition  
2005-2007 Ford Expedition  
2011-2021 Ford Expedition  
2001-2002 Ford Explorer  
2004-2021 Ford Explorer  
2001-2002 Ford Explorer Sport (2 door)  
2001-2002 Ford Explorer Sport Trac (pickup)  
2006-2010 Ford Explorer Sport Trac (pickup)  
2001-2021 Ford F150  
2004 Ford F150 (Heritage)  
2001-2007 Ford F250, F350, F450, F550 Super Duty  
2011-2021 Ford F250, F350, F450, F550, 2020 Ford F600  
2011-2019 Ford Fiesta  
2010-2019 Ford Flex  
2008-2018 Ford Focus  
2005-2007 Ford Freestyle

## SUPPORTED FORD VEHICLES, cont.

2006-2007 Ford Fusion  
2010-2020 Ford Fusion  
2017-2021 Ford GT  
2001-2007 Ford Mustang  
2010-2021 Ford Mustang  
2001-2006 Ford Ranger  
2010-2011 Ford Ranger  
2019-2020 Ford Ranger  
2001 Ford Taurus  
2010-2019 Ford Taurus  
2002-2005 Ford Thunderbird  
2015-2020 Ford Transit  
2013-2021 Ford Transit Connect  
2001-2003 Ford Windstar

### Lincoln

2020-2021 Lincoln Aviator  
2001-2002 Lincoln Continental  
2017-2020 Lincoln Continental  
2020-2021 Lincoln Corsair  
2001-2006 Lincoln LS 2006  
Lincoln Mark LT  
2015-2019 Lincoln MKC  
2010-2016 Lincoln MKS  
2010-2019 Lincoln MKT  
2007-2018 Lincoln MKX  
2007 Lincoln MKZ  
2010-2020 Lincoln MKZ  
2019-2020 Lincoln Nautilus  
2001-2002 Lincoln Navigator  
2005-2007 Lincoln Navigator  
2011-2021 Lincoln Navigator  
2001-2011 Lincoln Town Car  
2006 Lincoln Zephyr

### Mercury

2001-2011 Mercury Grand  
Marquis  
2003-2004 Mercury Marauder  
2009-2011 Mercury Mariner  
2006-2007 Mercury Milan  
2010-2011 Mercury Milan  
2005-2007 Mercury Montego  
2004-2010 Mercury Mountaineer  
2001 Mercury Sable

## SUPPORTED GM VEHICLES

### AVGM

2020-2021 AVGM AV1

### Buick

2005-2010 Buick Allure  
2016-2019 Buick Cascade  
1997-2005 Buick Century  
1994-1996 Buick Commercial  
2008-2021 Buick Enclave  
2013-2021 Buick Encore  
2015-2021 Buick Envision  
2005-2020 Buick Lacrosse  
1995-2005 Buick Le Sabre  
2006-2011 Buick Lucerne  
1995-2005 Buick Park Avenue  
2004-2008 Buick Rainer  
1995-2021 Buick Regal  
2002-2007 Buick Rendezvous  
1996-1999 Buick Riviera  
1994-1996 Buick Roadmaster  
1996-1998 Buick Skylark  
2005-2008 Buick Terraza  
2012-2017 Buick Verano

### Cadillac

2013-2019 Cadillac ATS  
1994-2007 Cadillac Commercial  
1995-1997 Cadillac Concourse  
2020-2021 Cadillac CT4  
2020-2021 Cadillac CT5  
2016-2020 Cadillac CT6  
2003-2019 Cadillac CTS  
1994-2005 Cadillac Deville  
2006-2011 Cadillac DTS  
1995-2002 Cadillac Eldorado  
1999-2000 Cadillac Escalade  
2002-2021 Cadillac Escalade  
2015-2017 Cadillac ELR  
2004-2005 Cadillac EXT  
1994-1996 Cadillac Fleetwood  
2008-2011 Cadillac Hears (DTS)  
2008-2011 Cadillac Limo (DTS)  
2013-2015 Cadillac Limo/Funeral  
Coach  
1995-2004 Cadillac Seville  
2005 Cadillac SLS  
2007-2012 Cadillac SLS  
2004-2016 Cadillac SRX  
2005-2011 Cadillac STS  
2019-2021 Cadillac XT4  
2017-2021 Cadillac XT5  
2020-2021 Cadillac XT6  
2003-2009 Cadillac XLR Roadster  
2013-2019 Cadillac XTS

### Chevrolet

1996-2005 Chevrolet Astro  
2002-2013 Chevrolet Avalanche  
2009-2020 Chevrolet Aveo

1998-2005 Chevrolet Blazer  
2019-2021 Chevrolet Blazer  
2017-2021 Chevrolet Bolt EV  
1999-2001 Chevrolet C/K pickup  
1996-2002 Chevrolet Camaro  
2010-2021 Chevrolet Camaro  
1994-1996 Chevrolet Caprice  
2011-2017 Chevrolet Caprice  
(Police)  
2008-2018 Chevrolet Captiva  
1996-2005 Chevrolet Cavalier  
2008 Chevrolet Cheyenne  
2015-2019 Chevrolet City  
Express  
2004-2005 Chevrolet Classic  
2005-2010 Chevrolet Cobalt  
2004-2012 Chevrolet Colorado  
2015-2021 Chevrolet Colorado  
1994-1996 Chevrolet  
Commercial  
1997-2021 Chevrolet Corvette  
2010-2020 Chevrolet Cruze  
2005-2021 Chevrolet Equinox  
1996-2021 Chevrolet Express  
2006-2011 Chevrolet HHR  
1995-1996 Chevrolet Impala  
2000-2020 Chevrolet Impala  
2003-2009 Chevrolet Kodiak  
2019 Chevrolet Low Cab  
Forward  
1995-2001 Chevrolet Lumina  
1997-2021 Chevrolet Malibu  
2012 Chevrolet Matiz  
1998-2001 Chevrolet Metro  
1995-2007 Chevrolet Monte  
Carlo  
2012-2014 Chevrolet Orlando  
1998-2004 Chevrolet S10  
1997-2021 Chevrolet Silverado  
2012-2020 Chevrolet Sonic  
2013-2021 Chevrolet Spark  
1997-2021 Chevrolet Suburban  
2015-2017 Chevrolet SS  
2003-2006 Chevrolet SSR  
1997-2021 Chevrolet Tahoe  
1998-2004 Chevrolet Tracker  
2015-2016 Chevrolet Tracker  
2018-2020 Chevrolet Tracker  
2002-2009 Chevrolet Trailblazer  
2021 Chevrolet Trailblazer  
2009-2021 Chevrolet Traverse  
2013-2021 Chevrolet Trax  
2005-2009 Chevrolet Uplander  
1997-2005 Chevrolet Venture  
2011-2020 Chevrolet Volt

### Geo

1995-1997 Geo Metro  
1996-1997 Geo Tracker

### GM

1997-1999 GM EV1

### GMC

2007-2020 GMC Acadia  
1999-2001 GMC C/K Pickup  
2004-2012 GMC Canyon  
2015-2020 GMC Canyon  
2002-2009 GMC Envoy  
1998-2005 GMC Jimmy  
1996-2005 GMC Safari  
1996-2019 GMC Savana  
1997-2020 GMC Sierra  
1998-2004 GMC Sonoma  
2010-2020 GMC Terrain  
2003-2009 GMC Top Kick  
1997-2019 GMC Yukon  
2001-2005 GMC Yukon XL

### HSV

2007-2017 HSV Clubsport  
2007-2017 HSV Grange  
2007-2017 HSV GTS  
2007-2017 HSV Senator

### Hummer

2003-2010 Hummer H2  
2006-2010 Hummer H3  
2009-2010 Hummer H3T

### Oldsmobile

1996-1998 Olds Achieva  
1996-1999 Olds LSS  
1999-2004 Olds Alero  
1996-1999 Olds Aurora  
2001-2003 Olds Aurora  
1998-2004 Olds Bravada  
1998-1999 Olds Cutlass  
1995-1997 Olds Cutlass Supreme  
1995-1999 Olds Eighty Eight  
1998-2002 Olds Intrigue  
1995-1996 Olds Ninety Eight  
1997-1998 Olds Regency  
1997-2004 Olds Silhouette

### Pontiac

2001-2005 Pontiac Aztek  
1995-2005 Pontiac Bonneville  
1996-2002 Pontiac Firebird  
1995-2001 Pontiac Firefly

**SUPPORTED GM VEHICLES, cont.**

2009-2010	Pontiac G3
2007-2010	Pontiac G5
2005-2010	Pontiac G6
2008-2010	Pontiac G8
1996-2005	Pontiac Grand AM
2007	Pontiac Grand AM
1994-2008	Pontiac Grand Prix
1999-2009	Pontiac Montana
2005-2006	Pontiac Pursuit
2006-2010	Pontiac Solstice
1996-2005	Pontiac Sunfire
1996-1998	Pontiac Sunrunner
2006-2009	Pontiac Torrent
1997-1999	Pontiac Trans Sport
2003-2010	Pontiac Vibe
2009-2010	Pontiac Wave

**Saturn**

1995-2003	Saturn All Models
2007-2010	Saturn Aura
2003-2007	Saturn ION
2004-2005	Saturn L300
2007-2010	Saturn Outlook
2005-2007	Saturn Relay
2007-2010	Saturn Sky
2002-2010	Saturn VUE

**SUPPORTED HONDA VEHICLES****Acura**

2013-2021	Acura ILX
2017-2021	Acura NSX
2012-2022	Acura MDX
2013-2021	Acura RDX
2012-2013	Acura RL
2014-2020	Acura RLX
2012-2014	Acura TL
2012-2014	Acura TSX
2015-2021	Acura TLX
2012-2013	Acura ZDX

**Honda**

2013-2021	Honda Accord
2012-2021	Honda Civic
2017-2021	Honda Clarity
2012-2015	Honda Crosstour
2012-2021	Honda CR-V
2012-2016	Honda CR-Z
2012-2020	Honda Fit, Fit EV
2016-2021	Honda HR-V
2012-2014	Honda Insight
2019-2021	Honda Insight
2012-2022	Honda Odyssey

2019-2021	Honda Passport
2012-2021	Honda Pilot
2012-2014	Honda Ridgeline
2017-2021	Honda Ridgeline

**SUPPORTED HYUNDAI VEHICLES****Hyundai**

2013-2021	Hyundai Accent
2013-2017	Hyundai Azera
2013-2021	Hyundai Elantra
2013-2016	Hyundai Equus
2013-2016	Hyundai Genesis
2017-2020	Hyundai Ioniq
2018-2021	Hyundai Kona
2019-2020	Hyundai Nexo
2020-2021	Hyundai Palisade
2013-2021	Hyundai Santa Fe
2013-2021	Hyundai Sonata
2013-2021	Hyundai Tucson
2013-2021	Hyundai Veloster
2020-2021	Hyundai Venue

**Genesis**

2019-2021	Genesis G70
2017-2021	Genesis G80
2017-2021	Genesis G90
2020-2021	Genesis GV80

**SUPPORTED KARMA VEHICLES****Karma**

2017-2020	Karma Revero
-----------	--------------

**SUPPORTED KIA VEHICLES****Kia**

2014-2020	Kia Cadenza
2013-2021	Kia Forte
2021	Kia K5
2015-2020	Kia K900
2017-2020	Kia Niro
2013-2020	Kia Optima
2013-2020	Kia Rio
2014-2021	Kia Sedona
2021	Kia Seltos
2013-2021	Kia Sorento
2013-2021	Kia Soul
2013-2021	Kia Sportage
2018-2021	Kia Stinger
2020-2021	Kia Telluride

**SUPPORTED LAMBORGHINI VEHICLES****Lamborghini**

2015-2021	Lamborghini Aventador
2015-2021	Lamborghini Huracan
2021	Lamborghini Urus

**SUPPORTED MASERATI VEHICLES****Maserati**

2014-2021	Maserati Ghibli
2015-2020	Maserati Gran Turismo
2017-2021	Maserati Levante
2014-2021	Maserati Quattroporte

**SUPPORTED MAZDA VEHICLES****Mazda**

2011-2014	Mazda 2
2016	Mazda 2
2012-2021	Mazda 3
2012-2015	Mazda 5
2011-2021	Mazda 6
2016-2021	Mazda CX-3
2013-2021	Mazda CX-5
2011-2021	Mazda CX-9
2020-2021	Mazda CX-30
2016-2021	Mazda MX-5 Miata

**SUPPORTED MERCEDES-BENZ VEHICLES****Mercedes-Benz**

2019-2021	M-B A-Class Limo
2021	M-B A-Class Hatchback
2016-2021	M-B AMG GT
2014-2020	M-B B-Class
2020-2021	M-B B-Class Limo
2014-2019	M-B B-Class EV
2015-2021	M-B C-Class
2014-2019	M-B CLA-Class
2020-2021	M-B CLA-Class Limo
2021	M-B CLA-Class Shooting Brake
2015-2021	M-B CLS-Class
2014-2021	M-B E-Class
2021	M-B EQA
2021	M-B EQB
2020-2021	M-B EQC
2015-2019	M-B G-Class
2015	M-B GL-Class

2014-2021	M-B GLA
2021	M-B GLB-Class
2016-2021	M-B GLC
2016-2021	M-B GLE-Class
2014-2015	M-B GLK
2017-2021	M-B GLS-Class
2019-2021	M-B GT
2020-2021	M-B G Wagon
2015	M-B M-Class
2016-2017	M-B Maybach S600
2016-2021	M-B Metris
2014-2021	M-B S-Class
2014-2020	M-B SL-Class
2017-2020	M-B SLC-Class
2014-2016	M-B SLK
2019-2021	M-B Sprinter

**Smart**

2015-2020	Smart All Vehicles
-----------	--------------------

**SUPPORTED MINI VEHICLES****MINI**

2014	Mini Clubman
2016-2021	Mini Clubman
2014-2021	Mini Convertible
2014-2021	Mini Countryman
2014-2015	Mini Coupe
2014-2021	Mini Hardtop
2014-2016	Mini Paceman
2014-2015	Mini Roadster

**SUPPORTED MITSUBISHI VEHICLES****MITSUBISHI**

2011-2019	Mitsubishi ASX
2018-2019	Mitsubishi Eclipse Cross
2014-2019	Mitsubishi Outlander
2011-2019	Mitsubishi Outlander Sport
2007-2010	Mitsubishi Raider
2011-2019	Mitsubishi RVR

**SUPPORTED NISSAN VEHICLES****Infiniti**

2007-2012	Infiniti All Vehicles - Coordinate with Nissan USA for Download
2013	Infiniti EX
2013	Infiniti FX
2013	Infiniti G
2012	Infiniti G25 Sedan



**SUPPORTED NISSAN VEHICLES, cont.**

2013	Infiniti JX35
2013	Infiniti M
2015	Infiniti Q40
2014-2020	Infiniti Q50
2014-2020	Infiniti Q60
2014-2019	Infiniti Q70
2013	Infiniti QX
2017-2020	Infiniti QX30
2014-2020	Infiniti QX50
2014-2020	Infiniti QX60
2014-2017	Infiniti QX70
2014-2020	Infiniti QX80

**Nissan**

2007-2012	Nissan All Vehicles - Coordinate with Nissan USA for Download
2013-2020	Nissan 370Z
2013-2020	Nissan Altima
2013-2015	Nissan Armada
2017-2020	Nissan Armada
2013-2014	Nissan Cube
2012-2019	Nissan Frontier
2014-2020	Nissan GT-R
2013-2017	Nissan Juke
2019-2020	Nissan Kicks
2013-2020	Nissan Leaf
2013-2020	Nissan Maxima
2015-2019	Nissan MICRA (Canada Only)
2013-2020	Nissan Murano
2013-2020	Nissan NV
2013-2020	Nissan NV200
2013-2020	Nissan Pathfinder
2017-2020	Nissan Qashqai (Canada Only)
2013-2017	Nissan Quest
2013-2020	Nissan Rogue
2019-2020	Nissan Rogue Sport
2013-2020	Nissan Sentra
2013-2020	Nissan Titan
2012	Nissan Versa Hatchback
2013-2016	Nissan Versa Sedan
2018-2020	Nissan Versa Sedan
2014-2019	Nissan Versa Note
2012-2015	Nissan Xterra

**SUPPORTED PORSCHE VEHICLES****Porsche**

2019-2021	Porsche Taycan
-----------	----------------

**SUPPORTED ROLLS ROYCE VEHICLES****Rolls-Royce**

2019-2021	Rolls-Royce Cullinan
2017-2021	Rolls-Royce Dawn
2013-2021	Rolls-Royce Ghost
2014-2021	Rolls-Royce Phantom
2014-2021	Rolls-Royce Wraith

**SUPPORTED SUBARU VEHICLES****Subaru**

2019-2020	Subaru Ascent
2013-2021	Subaru Crosstrek
2013-2021	Subaru Forester
2012-2021	Subaru Impreza
2013-2018	Subaru Legacy
2015-2019	Subaru Levorg
2013-2018	Subaru Outback
2020-2021	Subaru Outback
2015-2018	Subaru WRX
2012-2021	Subaru VX

**SUPPORTED SUZUKI VEHICLES****Suzuki**

2012-2013	Suzuki Equator
2013-2014	Suzuki Grand Vitara
2013-2014	Suzuki Kizashi
1995-2001	Suzuki Swift
1996-1998	Suzuki Sidekick
2013-2014	Suzuki SX4
1999-2004	Suzuki Vitara
2007-2010	Suzuki XL-7

**SUPPORTED TESLA VEHICLES****Tesla**

All	Tesla Model 3
All	Tesla Model S
All	Tesla Model X
All	Tesla Model Y

**SUPPORTED TOYOTA VEHICLES****Lexus**

2010-2017	Lexus CT200h
2001-2017	Lexus ES
2000-2017	Lexus GS
2015-2017	Lexus GS-F
2002-2017	Lexus GX
2009-2017	Lexus HS

2005-2017	Lexus IS
2007-2014	Lexus IS-F
2018	Lexus LC
2010-2012	Lexus LF-A
2001-2021	Lexus LS
2002-2017	Lexus LX
2014-2017	Lexus NX
2014-2017	Lexus RC 350
2014-2017	Lexus RC-F
2003-2017	Lexus RX
2001-2010	Lexus SC

**Scion**

2012-2016	Scion FR-S
2016	Scion iA
2015-2016	Scion iM
2009-2016	Scion iQ
2004-2016	Scion tC
2003-2016	Scion xA
2003-2016	Scion xB
2003-2016	Scion xD

**Toyota**

2002-2021	Toyota 4Runner
2019-2020	Toyota 86
2002-2021	Toyota Avalon
2016-2021	Toyota C-HR
2001-2021	Toyota Camry
2003-2007	Toyota Camry/Solara
2003-2021	Toyota Corolla
2003-2012	Toyota Echo
2007-2014	Toyota FJ Cruiser
2004-2021	Toyota Highlander
2003-2021	Toyota Land Cruiser
2003-2014	Toyota Matrix
2014-2021	Toyota Mirai
2004-2021	Toyota Prius - includes plug-in
2003-2021	Toyota Rav4
2004-2021	Toyota Sequoia
2003-2021	Toyota Sienna
2020-2021	Toyota Supra
2005-2021	Toyota Tacoma
2005-2021	Toyota Tundra
2008-2021	Toyota Venza
2002-2021	Toyota Yaris

**SUPPORTED VOLKSWAGEN VEHICLES****Volkswagen**

2018-2021	Volkswagen Arteon
2018-2021	Volkswagen Atlas
2015-2021	Volkswagen Beetle
2015-2017	Volkswagen CC

2018-2021	Volkswagen Crafter
2014-2016	Volkswagen EOS
2015-2021	Volkswagen Golf, eGolf
2015-2016	Volkswagen GTI
2015-2021	Volkswagen Jetta
2020-2021	Volkswagen Neo
2015-2021	Volkswagen Passat
2018-2021	Volkswagen Polo
2009-2014	Volkswagen Routan
2019-2021	Volkswagen T-Cross
2018-2021	Volkswagen T-Roc
2015-2021	Volkswagen Tiguan
2015-2021	Volkswagen Toureg
2019-2021	Volkswagen Virtus

**SUPPORTED VOLVO VEHICLES****Volvo**

2011-2019	Volvo S60, S60L
2017-2018	Volvo S90
2018	Volvo V40
2011-2019	Volvo V60
2017-2018	Volvo V90
2013-2016	Volvo S80, S80L
2013-2016	Volvo V70
2018-2019	Volvo XC40
2013-2018	Volvo XC60
2013-2016	Volvo XC70
2016-2018	Volvo XC90

**OTHER SUPPORTED VEHICLES****Alpheon**

2011-2015	Alpheon Alpheon
-----------	-----------------

**Freightliner**

2019-2021	Freightliner Sprinter Van
-----------	---------------------------

**Isuzu**

1998-2000	Isuzu Hombre
2003-2009	Isuzu Ascender
2006	Isuzu i280 and i350
2007-2009	Isuzu i290 and i370

**Opel**

2013-2015	Opel Astra
2017-2018	Opel Ampera-e
2013-2015	Opel Insignia

**Saab**

2010-2012	Saab 9-4x
2010-2011	Saab 9-5
2005-2009	Saab 9-7X





## **Background**

### **Practice Areas:**

- Transportation
- Commercial Litigation
- Construction Litigation
- General Negligence
- Arbitration and Mediation

### **Education:**

- J.D., DePaul University (with Honors), 1996
- B.A., University of Illinois at Urbana-Champaign, 1993

### **Bar Admissions:**

- State of Illinois (1996)
- United States District Court for the Northern District of Illinois (1996)
- United States District Court for the Southern District of Indiana (2004)
- United States District Court for the Southern District of Illinois (2009)

### **Contact Information:**

65 East Wacker Place, Suite 1220  
Chicago, IL 60601  
Phone: (847) 625-8200  
Fax: (847) 625-8262  
Email: [scanty@ocnlaw.com](mailto:scanty@ocnlaw.com)

## **Steven M. Canty, Partner**



ORLEANS CANTY NOVY

Steve represents both large and small corporations and individuals, as self-insureds and as insureds on behalf of insurance companies. Steve's practice focuses on the defense of insureds and self-insureds with concentration in tort defense in all areas of construction litigation, transportation litigation, construction injury, construction defect litigation and insurance defense. Litigation experience extends throughout the State of Illinois. Steve serves as an on-call emergency on-site presence for catastrophic injuries and accident investigations, available 24 hours a day. Responsibilities include management of files and oversight of associates from initial filing through resolution; establishing and implementing all phases of preparation from initial investigation and strategy for complicated and complex litigation.

In addition, Steve is a member of the Defense Research Institute, Transportation Lawyers Association and the Trucking Industry Defense Association. Steve has written, published and given presentations on numerous topics involving litigation.

Steve is also a member of the Executive Committee of the Transportation Lawyers Association. The TLA is an independent bar association dedicated to the issues of the transportation industry both nationally and internationally. Steve has also served as the editor of The Transportation Lawyer magazine, a legal publication featuring articles submitted by members on the most updated matters related to transportation law. In 2015, Steve was honored with the TLA Distinguished Service Award for advancement of the goals of the Transportation Lawyers Association.

### **Professional Affiliations:**

- Certified Arbitrator for the Nineteenth Judicial Circuit
- Claims & Litigation Management Alliance
- Defense Research Institute
- International Association of Defense Counsel
- Trucking Industry Defense Association
- Transportation Lawyers Association (TLA), President (2021-2022) First Vice President (2020-2021); Second Vice President (2019-2020); Secretary/Treasurer (2018-2019)
- TLA Chicago Seminar Co-chair (2012-2017)

### **Honors & Awards:**

- Illinois Super Lawyers, most recent 2021
- Illinois Leading Lawyers, most recent 2021
- TLA Distinguished Service Award, 2015
- DePaul University Order of the Coif, 1996
- CALI Award, 1995, 1996
- American Jurisprudence Award, 1994



## **Background**

### **Practice Areas:**

- Transportation and Logistics
- Insurance Coverage
- Consultation and Contract Review
- Cargo Claim Litigation
- Casualty Defense Litigation in State and Federal Courts
- Arbitration and Mediation
- Appeals

### **Education:**

- J.D., Chicago-Kent College of Law, 1998
- B.A., University of Illinois at Urbana-Champaign, 1995, *Cum Laude*

### **Bar Admissions:**

- State of Illinois
- State of Wisconsin
- United States District Court for the Northern District of Illinois
- United States District Court for the Central District of Illinois
- United States District Court for the Southern District of Illinois
- United States District Court for the Eastern District of Wisconsin
- United States District Court for the Western District of Wisconsin
- United States Seventh Circuit Court of Appeals
- United States Eighth Circuit Court of Appeals
- United States Supreme Court

### **Contact Information:**

65 East Wacker Place, Suite 1220  
Chicago, IL 60601  
Phone: (847) 625-8200  
Fax: (847) 625-8262  
Email: [jorleans@ocnlaw.com](mailto:jorleans@ocnlaw.com)

# **Jason Orleans, Partner**



ORLEANS CANTY NOVY

Jason's practice focuses on transportation and logistics related matters, including casualty defense and cargo claims and litigation under the Federal Carmack Amendment. His practice includes trial work in State and Federal courts, the Illinois Court of Claims, and hearings at private mediation and arbitration. Jason serves as outside transportation counsel for motor carriers and freight brokers. His practice also includes insurance coverage litigation in State and Federal courts. Jason has also drafted extensive appellate briefs and argued appellate cases in State and Federal Appellate Courts on far reaching transportation and insurance issues. He has served as a Certified Arbitrator in Lake County, Illinois as part of the Illinois Mandatory Arbitration program.

### **Professional Affiliations:**

- Conference of Freight Counsel – Member
- Transportation Lawyers' Association, Cargo Claims Committee Co-Chair, Representative-at-Large.
- DRI – Member

### **Honors & Awards:**

- Member – *Phi Beta Kappa* – National Honors Society
- *Cum Laude* – Honors from the University of Illinois
- *CALI Award* recipient for Comparative Law
- Leading Lawyer 2018, 2021

### **Representative Cases:**

- *Lumbermens Mutual Insurance v. Swift Transportation and GES Exposition Services*, 303 F.Supp 2d 920 (N.D. Ill. 2003)
- *Carolina Casualty Ins. Co. v. Estate of Sperl, et al.*, 27 N.E.3d 635 (3rd. Dist. 2015)
- *Allianz Global Risks v. Kutzler Express, Inc.*, 2016 U.S. Dist. Lexis 67257 (E.D. Wis. 2016)
- *Acuity v. Rex, LLC*, 929 F.3d 995 (8th Cir. 2019)
- *Asphalt Contractors, Inc. v. R & J Transp.*, 2021 U.S. Dist. Lexis (E.D. Wis. 2021)
- *CH Robinson v. Allen Miller*, U.S. Sup. Ct. Dkt. 20-1425 (2021), *Brief Amici Curiae of Leading Industry Freight Brokers in Support of Appellant – CH Robinson*.

### **Representative Publications/Presentations:**

- Spotting the Issues and Navigating the Conflicts in a Catastrophic Loss, Truck Accident Litigation, 2<sup>nd</sup> Addition, ABA Publishing, 2006 at 357-365, 2006.
- Illinois Appellate Court Further Expands Vicarious Liability in Commercial Transportation Industry: *Hoffman v. Crane*, 2014 IL App (1<sup>st</sup>) 122793-U, Case Note, the Transportation Lawyer, July, 2014, Vol. 16, No. 1.
- Milwaukee Logistics Council, A Primer on cargo claims and defenses, Milwaukee, WI 2015.
- Grasping State Transportation Anti-Indemnity Statutes and Dealing with the Knowns and Unknowns, NBI, Inc., Article and Webinar Presenter, October, 2015.
- Ethical Considerations Attorneys Need to be Aware of for Contract Drafting and Negotiations, NBI, Inc., Article and Webinar Presenter, October, 2015.
- "The Broker/Carrier Contract," Webinar Presenter Stratford Continuing Education, May, 2016.
- TLA Webinar-Presenter "Carmack Waiver"/"The Sophisticated Shipper." October, 2016.
- TLA, Chicago Regional Seminar, Program Co-Chair, 2021 and Panel Moderator, "Perspectives on Transportation Casualty Defense."
- TLA, Webinar-Presenter – SCOTUS Watch – *CH Robinson v. Allen Miller*, December 2021



## Bradley A. Bertkau, Partner



ORLEANS COUNTY, ILLINOIS

### **Background**

#### **Practice Areas:**

- Litigation
- Transportation
- Insurance Coverage
- Cargo
- Construction
- General Negligence
- Appellate

#### **Education:**

- J.D., The John Marshall Law School, 2008
- B.A., Lafayette College, 2003

#### **Bar Admissions:**

- State of Illinois (2008)
- United States District Court for the Northern District of Illinois (2009)
- United States District Court for the Central District of Illinois (2017)
- United States District Court for the Southern District of Illinois (2018)
- United States District Court for the Northern District of Indiana (2010)

#### **Contact Information:**

65 East Wacker Place, Suite 1220  
Chicago, IL 60601  
Phone: (847) 625-8200  
Fax: (847) 625-8262  
Email: [bbertkau@ocnlaw.com](mailto:bbertkau@ocnlaw.com)

Brad represents both large and small corporations and individuals, as self-insureds and as insureds on behalf of insurance companies. Brad's practice focuses on the defense of insureds and self-insureds with his primary concentration of legal representation in tort defense in all areas of construction litigation, transportation litigation, construction injury, construction defect litigation and insurance defense. His practice includes handling matters from the initial inception of a claim through trial, including post-judgment appellate work. Responsibilities include management of files from initial filing through resolution; establishing and implementing all phases of preparation from initial investigation and strategy for complicated and complex litigation. Litigation experience extends throughout the State of Illinois. In addition, Brad is a member of the Chicago Bar Association, Transportation Lawyers Association and the Trucking Industry Defense Association. The TLA, TIDA, and CFC are an independent associations dedicated to the issues of the transportation industry both nationally and internationally.

#### **Professional Affiliations:**

- Chicago Bar Association
- Transportation Lawyers Association
  - Freight Claims Committee
- Trucking Industry Defense Association
  - Diversity & Inclusion Committee
- Conference of Freight Counsel
- Claims Litigation Management Alliance

#### **Honors & Awards:**

- Illinois Super Lawyer Magazine, Super Lawyer
- Leading Lawyer Magazine, Emerging Lawyer

#### **Presentations:**

- F4A What? FAAAA Preemption as It Relates to Casualty Claims – Transportation Lawyers Association Regional Seminar, 2021

#### **Publications:**

- The Transportation Lawyer – The FAAAA Preemption of Personal Injury Lawsuits: *Creagan v. Wal-Mart Transp., LLC*
- Broker/Shipper Liability (Presentation 2016)
- Liability Issues – under the Uniform Intermodal Facilities Access Agreement (UIIA) (2016)
- *Case Note – Ready v. United/Goedecke Services, Inc.* (Construction Law Newsletter)

#### **Other:**

- Judicial Externship with Administrative Law Judge Claudia Sainsot, of the Illinois Commerce Commission.

#### **Representative Cases:**

- *CH Robinson v. Allen Miller*, U.S. Sup. Ct. Dkt. 20-1425, Brief amici curiae of Leading Industry Freight Brokers
- *Acuity v. Decker*, 2015 IL App (2d) 150192
- *Carolina Cas. Ins. Co. v. Estate of Sperl*, 2015 IL App (3d) 130294
- *Rahic v. Satellite Air-Land Motor Serv.*, 2014 IL App (1st) 132900
- *Oshkosh Storage Co. v. Kraze Trucking LLC*, 2014 U.S. Dist. LEXIS 176217
- *Hoffman v. Crane*, 2014 IL App (1st) 122793-U
- *Swanson v. Nims*, 2012 U.S. Dist. LEXIS 25299 (N.D. Ind.)



## **Background**

### **Practice Areas:**

- Civil Defense Litigation
- Transportation and Logistics
- Construction and Premises Liability
- Insurance Litigation and Coverage
- Consultation and Contract Review
- Arbitration and Mediation

### **Education:**

- J.D., Vermont Law School, 2007
- B.A., University of Vermont, 2001

### **Bar Admissions:**

- State of Illinois
- United States District Court for the Northern District of Illinois
- United States District Court for the Southern District of Illinois

### **Contact Information:**

65 East Wacker Place,  
Suite 1220  
Chicago, IL 60601  
Phone: (847) 625-8200  
Fax: (847) 625-8262  
Email: [lgordon@ocnlaw.com](mailto:lgordon@ocnlaw.com)

## **Laura P. Gordon, Partner**



ORLEANS COUNTY NOVY

Laura's practice involves the defense of corporations and individuals with concentration in tort defense in all areas of construction litigation, transportation litigation, construction injury, construction defect litigation, and insurance defense. Her practice also includes insurance coverage litigation in State and Federal courts, with an emphasis on coverage disputes arising from construction and transportation related losses.

### **Professional Affiliations:**

- Chicago Bar Association
- DRI – Member and Participant at annual Women in the Law and Diversity for Success Seminars
- LAGBAC
- CLM Alliance
- Transportation Lawyers Association

### **Honors & Awards:**

- Leading Lawyers – Emerging Lawyer 2015, 2016, 2017, and 2018 and selected by peers in 2017 and 2018 for distinctions in Construction Law and Insurance Related Law.
- *Cum Laude* – Honors from Vermont Law School.
- Academic Excellence Award recipient for Contracts and Evidence

### **Publications:**

- *Illinois Appellate Court Further Expands Vicarious Liability in Commercial Transportation Industry*: Hoffman v. Crane, 2014 IL App (1<sup>st</sup>) 122793-U, Case Note, The Transportation Lawyer, July 2014, Vol. 16, No. 1.
- Vermont Law Review, Staff Member, Vermont Editor, Production Coordinator, and Personal Note Editor (2007-2009)

### **Representative Cases:**

- *Quaid v. Baxter Healthcare Corp.*, 392 Ill. App. 3d 757 (1st Dist. 2009).
- *Payne v. Schneider Nat'l Carriers, Inc.*, 2011 U.S. Dist. LEXIS 44718 - 44718, (S.D. Ill. 2011)
- *Markow v. Dern*, 2012 Ill. Cir. LEXIS 78 (2012)