

Catastrophic Call-Out Program

Attorneys On Call 24/7

Casualty, Property and Cargo Response Team

Illinois | Indiana | Wisconsin

CANTY NOVY BERTKAU GORDON, LLC
65 E. Wacker Place, Suite 1220, Chicago, IL 60601
847.625.8200
cantynovy.com

TABLE OF CONTENTS

Click on tab number to go to page

TAB

Attorney Contacts	1
Area Map	2
Venue Volatility Map	3
State Police Districts (Illinois, Wisconsin, and Indiana).....	4
Sheriff Departments (Illinois)	5
TPA/Experts/Consultants.	6
Investigation Checklist.....	7
Event-Data Recorder Vehicles	8
Attorney CVs	9

CATASTROPHIC CALL-OUT PROGRAM
COVERING NORTHERN ILLINOIS
SOUTHEAST WISCONSIN *and* NORTHWEST INDIANA

Steven M. Canty (Team Coordinator)

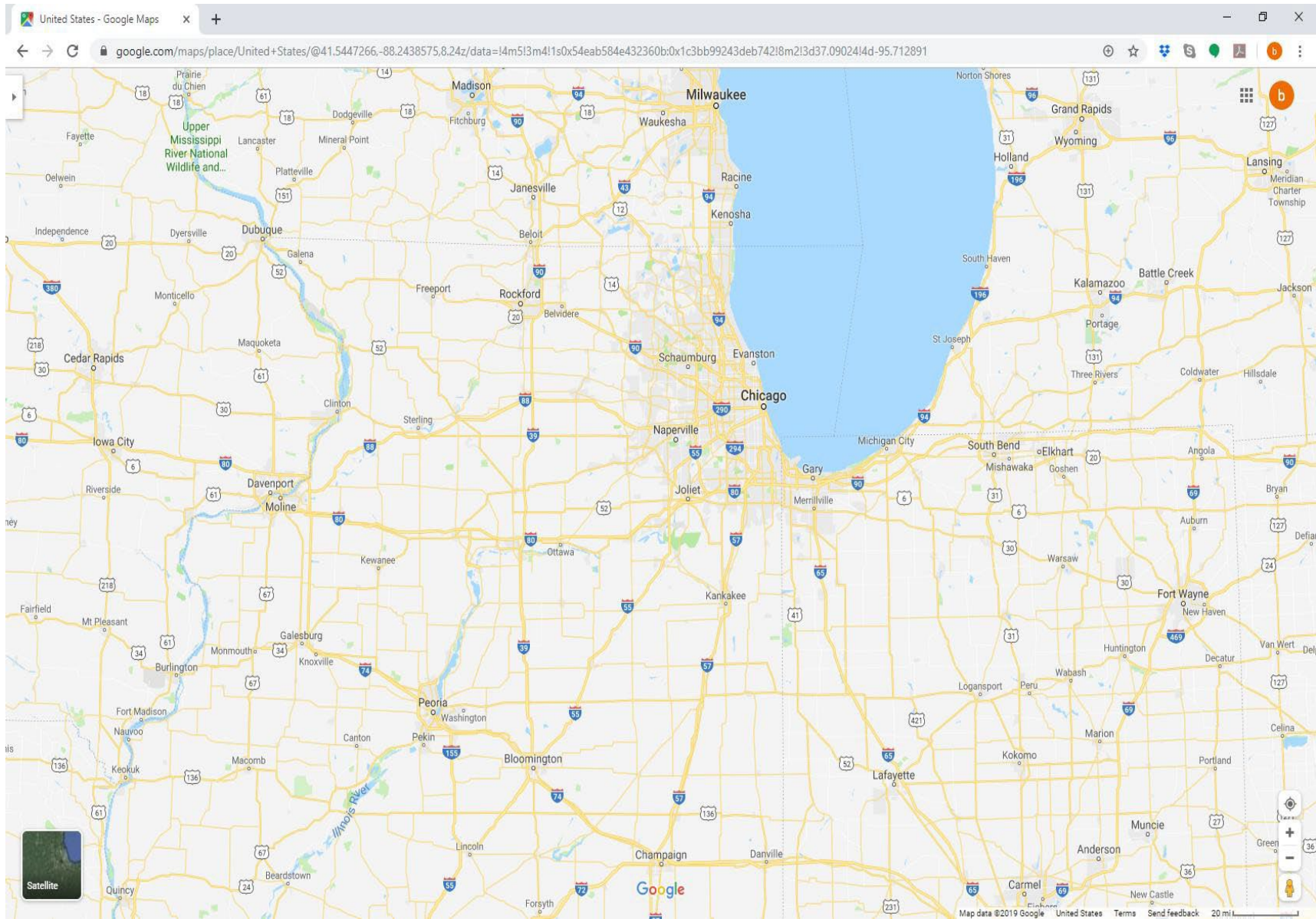
Direct: (847)338-1108
Office: (847)625-8200
E-mail: scanty@cnbglaw.com

Bradley A. Bertkau

Direct: (914) 347-2199
Office: (847) 625-8200
E-mail: bbertkau@cnbglaw.com

Laura P. Gordon

Direct (312) 235-1039
Office: (847) 625-8200
E-mail: lgordon@cnbglaw.com



VENUE VOLATILITY MAP

Jury Venues

C = Conservative

VC = Very Conservative

L = Liberal

M = Moderate

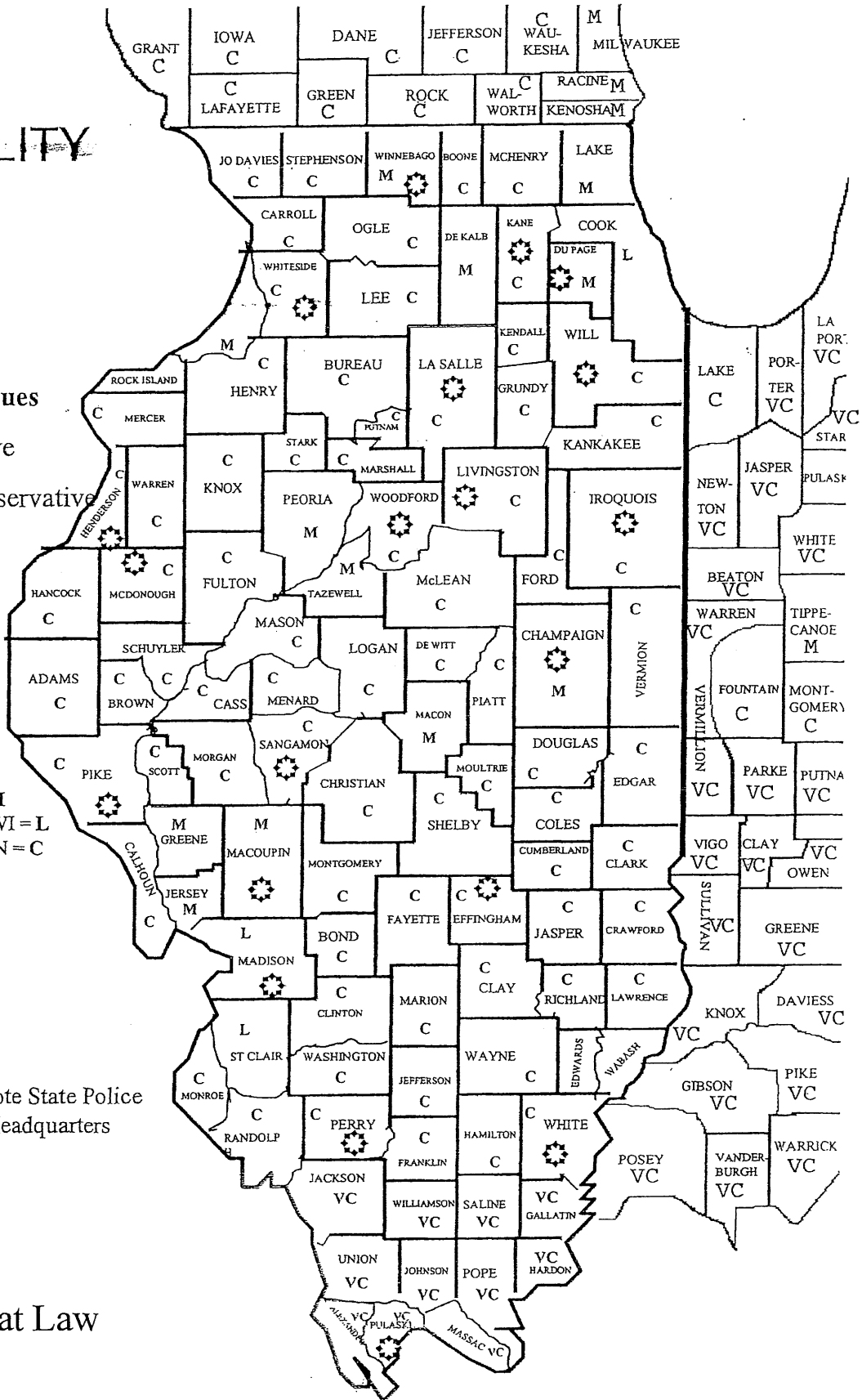
Racine, WI = M

Kenosha, WI = L

Lake County, IN = C

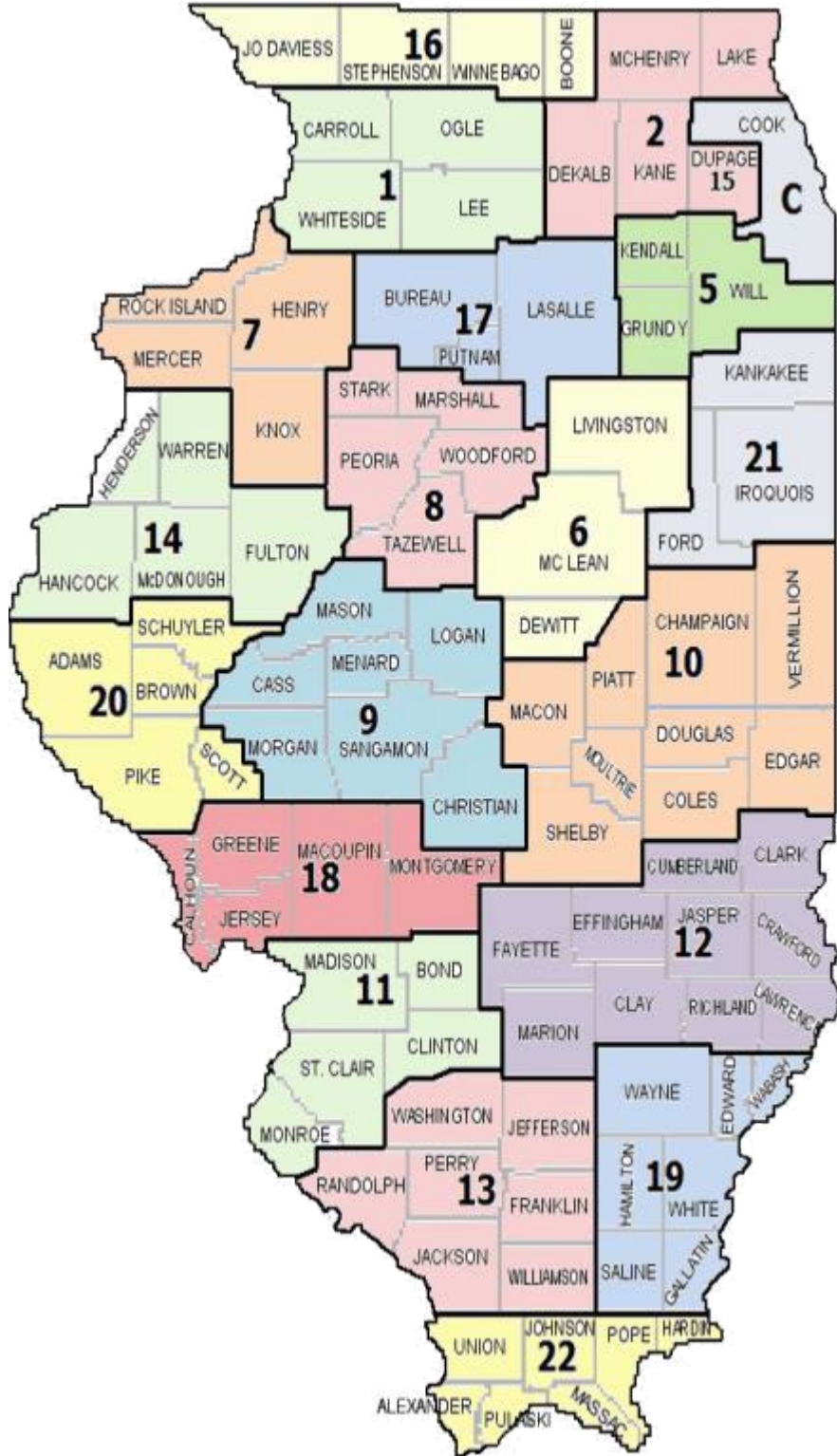
☼ Denote State Police Headquarters

Attorneys at Law



Illinois State Police District Map

Go to: [Illinois State Police Home Page](#)



Indiana State Police

District Map

Go to: [ISP: Home \(in.gov\)](http://isp.in.gov)



Wisconsin State Patrol

District Map

Go to: [Wisconsin State Patrol Home](#)

Spoooner Post

Capt. Craig Larson, Commander
Lt. Timothy Weiberg, Executive Officer
W7102 Green Valley Rd.
Spoooner, WI 54801
Telephone (715) 635-2141
Fax (715) 635-6373

Eau Claire Post

Capt. Craig Larson, Commander
Lt. Dean Haigh, Executive Officer
5005 U.S. Highway 53
Eau Claire, WI 54701-8846
Telephone (715) 839-3800
Fax (715) 839-3841

Wisconsin State Patrol Academy

Capt. Les Mlsna, Director of Training
Lt. Frank C. Hefli, Executive Officer
95 S. 10th Ave.
Ft. McCoy, WI 54656-5168
Telephone (608) 366-3307
Fax (608) 269-5681

Tomah Post

Capt. Jason L. Zeeh, Commander
Lt. Jeremy T. Foster, Executive Officer
(I-90, Tomah Exit Hwy. 131)
23928 Lester McMullen Dr.
Tomah, WI 54660-5376
Telephone (608) 374-0513
Fax (608) 846-8536

DeForest Post

Capt. Jason L. Zeeh, Commander
Lt. Edward Witkiewicz, Executive Officer
911 W North St.
DeForest, WI 53532-1971
Telephone (608) 846-8500
Fax (608) 846-8536

Division Headquarters

Anthony Burrell, Superintendent
Timothy Carnahan, Colonel
4822 Madison Yards Way, 9th Floor South
Madison, WI 53705
Telephone 1-844-847-1234
Fax (608) 267-4495

Wausau Post

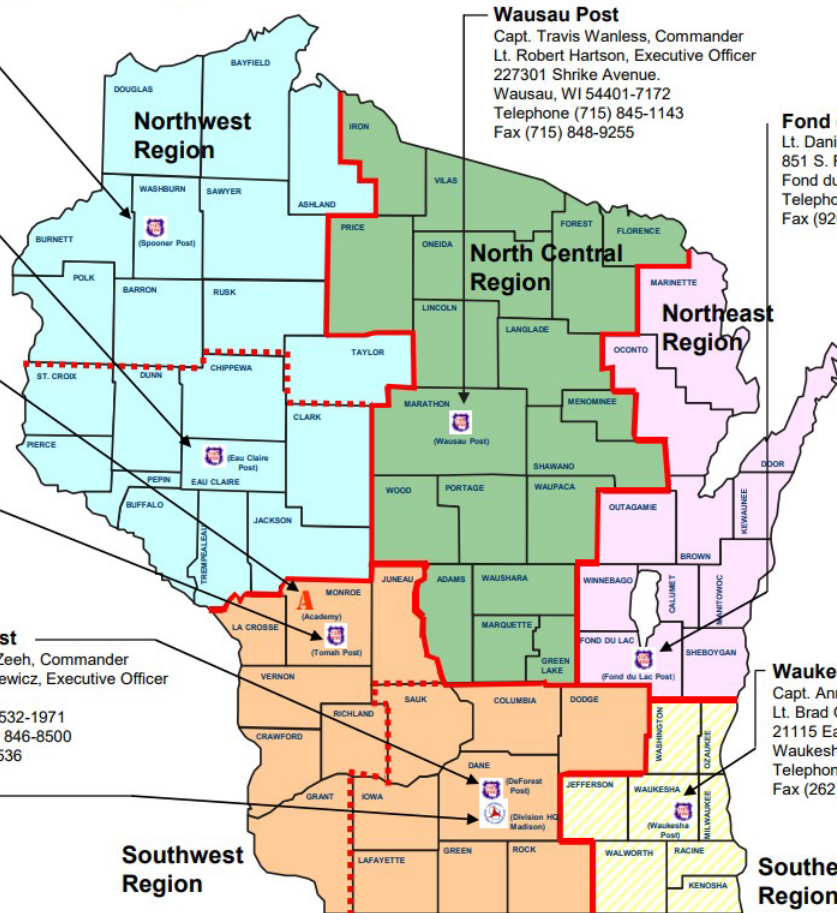
Capt. Travis Wanless, Commander
Lt. Robert Hartson, Executive Officer
227301 Shrike Avenue.
Wausau, WI 54401-7172
Telephone (715) 845-1143
Fax (715) 848-9255

Fond du Lac Post

Lt. Daniel Gruebele, Executive Officer
851 S. Rolling Meadows Dr.
Fond du Lac, WI 54937-9902
Telephone (920) 929-3700
Fax (920) 929-7666

Waukesha Post

Capt. Anne Maxson, Commander
Lt. Brad Ocain, Executive Officer
21115 East Moreland Blvd.
Waukesha, WI 53186-2985
Telephone (262) 785-4700
Fax (262) 785-4722



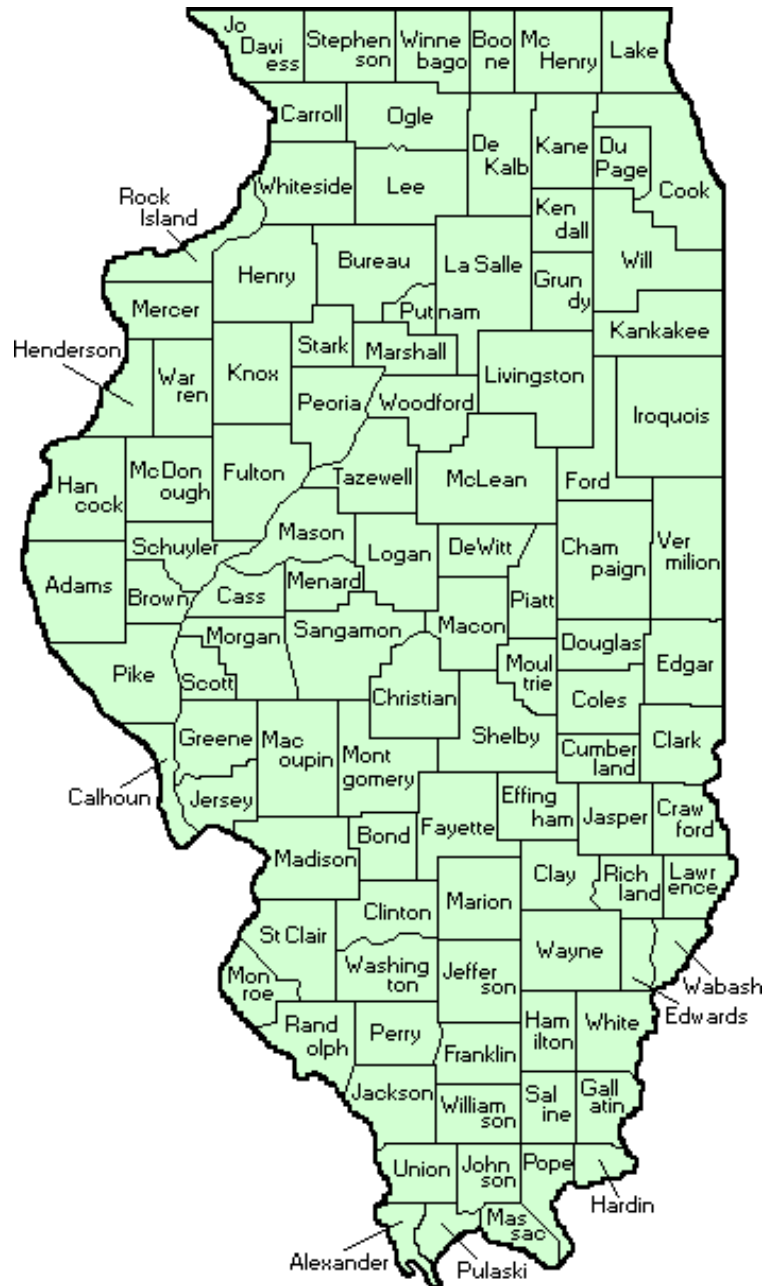
ILLINOIS STATE POLICE DISTRICTS, LOCATION OF HEADQUARTER POSTS AND COUNTIES SERVED

District 1	Sterling	3107 E. Lincolnway Sterling, Illinois Telephone: (815) 632-4010	Carroll Lee Ogle Whiteside
District 2	Elgin	777 S. State St. Elgin, Illinois Telephone:(847) 931-2405	DeKalb DuPage Kane Lake McHenry
District Chicago	Des Plaines	9511 W. Harrison St. Des Plaines, Illinois Telephone: (847) 294-4400	Cook
District 5	Lockport	16648 S. Broadway Lockport, Illinois Telephone: (815) 726 6377	Grundy Kendall Will
District 6	Pontiac	800 Old Airport Road Pontiac, Illinois Telephone: (815) 844-1500	De Witt Livingston McLean
District 7	East Moline	800 Hillcrest Rd. East Moline, Illinois Telephone: (309) 752-4915	Henry Knox Mercer Rock Island
District 8	Metamora	1265 Lourdes Rd. Metamora, Illinois Telephone: (309) 383-2133	Marshall Peoria Stark Tazewell Woodford
District 9	Springfield	801 South 7th Street, Suite 100-M Springfield, Illinois Telephone: (217) 786-7107	Cass Christian Logan Mason Menard Morgan Sangamon
District 10	Pesotum	P.O. Box 110 Pesotum, Illinois Telephone: (217) 867-2050	Champaign Coles Douglas Edgar Macon Moultrie Piatt Shelby Vermilion
District 11	Collinsville	1100 Eastport Plaza Dr. Collinsville, Illinois Telephone: (618) 346-3990	Bond Clinton Madison Monroe St. Clair
District 12	Effingham	401 Industrial Ave., Suite A Effingham, Illinois Telephone: (217) 347-2711	Clark Clay Crawford Cumberland Effingham Fayette Jasper Lawrence Marion Richland
District 13	DuQuoin	1391 S. Washington Street DuQuoin, Illinois Telephone: (618) 542 -2171	Franklin Jackson Jefferson Perry Randolph Washington Williamson
District 14	Macomb	1600 North Lafayette Street Macomb, Illinois Telephone: (309) 833-4046	Fulton Hancock Henderson McDonough Warren
District 15	Oak Brook	2700 Ogden Ave. Downers Grove, Illinois Telephone: (630) 241-6800 Ext. 5030	Tollway
District 16	Pecatonica	16450 West State Rd. Pecatonica, Illinois Telephone: (815) 239-1152	Boone Jo Daviess Stephenson Winnebago
District 17	LaSalle	2971 E. 350th Road La Salle, Illinois Telephone: (815) 224-1171	Bureau La Salle Putnam
District 18	Litchfield	102 Illinois Route 16 Litchfield, Illinois Telephone: (217) 324-4900	Calhoun Greene Jersey Macoupin Montgomery
District 19	Carmi	919 Illinois Route 14 Carmi, Illinois Telephone: (618) 382-4606	Edwards Gallatin Hamilton Saline Wabash Wayne White

District 20	Pittsfield	P.O. Box 32 Pittsfield, Illinois Telephone: (217) 285-2034	Adams Brown Pike Schuyler Scott
District 21	Ashkum	P.O. Box 147 Ashkum, Illinois Telephone: (815) 698-2395	Ford Iroquois Kankakee
District 22	Ullin	1154 Shawnee College Rd. Ullin, Illinois Telephone: (618) 845-3740	Alexander Hardin Johnson Massac Pope Pulaski Union

Illinois Sheriffs' Departments

Go to [Sheriffs' Directory – Illinois Sheriffs' Association \(ilsheriff.org\)](http://ilsheriff.org) for interactive map



ILLINOIS SHERIFFS' DEPARTMENTS

Adams County
521 Vermont Street
Quincy, IL 62301
(217) 277-2206

Alexander County
2000 Washington Ave.
Cairo, IL 62914
(618) 734-2141

Bond County
403 South Second Street
Greenville, IL 62246
(618) 664-4689

Boone County
615 North Main Street
Belvidere, IL 61008
(815) 544-9322

Brown County
200 E. Court, Room #1
Mt. Sterling, IL 62353
(217) 773-2011

Bureau County
700 S. Main Street
Princeton, IL 61356
(815) 857-3344

Calhoun County
Box 635
Hardin, IL 62047
(618) 576-9041

Carroll County
301 N. Main Street
Mt. Carroll, IL 61053
(815) 244-9171

Cass County
101 N. Front Street
Virginia, IL 62691
(217) 452-7718

Champaign County
204 East Main Street
Urbana, IL 61801
(217) 384-1205

Christian County
301 W. Franklin Street
Taylorsville, IL 62568
(217) 824-4961

Clark County
207 N. Fifth Street
Marshall, IL 62441
(217) 826-6393

Clinton County
810 Franklin Street
Carlyle, IL 62231
(618) 594-4555

Coles County
701 7th Street
Charleston, IL 61920
(217) 348-0585

Cook County
50 W. Washington
Chicago, IL 60602
(773) 674-7710

Crawford County
203 South Jefferson
Robinson, IL 62454
(618) 546-1515

Cumberland County
166 Courthouse Square
Toledo, IL 62468
(217) 849-2471

DeKalb County
150 N. Main Street
Sycamore, IL 61078
(815) 895-7260

DeWitt County
101 W. Washington
Street Clinton, IL 61727
(217) 935-9507

Douglas County
920 South Washington
Tuscola, IL 61953
(217) 253-2913

DuPage County
501 N. County Farm Road
Wheaton, IL 60187
(630) 407-2000

Edgar County
228 North Central
Paris, IL 61944
(217) 465-4166

Edwards County
50 Main Street
Albion, IL 62806
(618) 445-2721

Effingham County
101 N. 4th Street
Effingham, IL 62401
(217) 342-8463

Fayette County
221 South 7th Street
Vandalia, IL 62471
(618) 283-2141

Ford County
235 N. American Street
Paxton, IL 60957
(217) 379-2324

Franklin County
403 East Main Street
Benton, IL 62812
(618) 438-8211

Fulton County
268 W. Washington
Lewistown, IL 61542
(309) 547-2277

Gallatin County
P.O. Box 340
Shawneetown, IL 62984
(618) 269-3137

Greene County
403 7th Street
Carrollton, IL 62016
(217) 942-6901

Grundy County
111 East Illinois Ave.
Morris, IL 60450
(815) 942-6645

Hamilton County
100 S. Jackson Street
McLeansboro, IL 62859
(618) 643-2511

Hancock County
98 Buchanan Street
Carthage, IL 62321
(217) 357-2115

Hardin County
1 Courthouse Hill
Elizabethtown, IL 62931
(618) 287-2271

Henderson County
P.O. Box 228
Oquawka, IL 61469
(309) 867-4291

Henry County
311 West Center Street
Cambridge, IL 61238
(309) 937-3911

Iroquois County
550 S. 10th Street
Watseka, IL 60970
(815) 432-6992

Jackson County
1001 Mulberry Street
Murphysboro, IL 62966
(618) 687-3822

Jasper County
106 East Morgan
Newton, IL 62448
(618) 783-8477

Jefferson County
911 Casey Ave.
Mt. Vernon, IL 62864
(618) 244-8004

Jersey County
114 N. Washington St.
Jerseyville, IL 62052
(618) 498-6881

JoDaviess County
330 N. Bench Street
Galena, IL 61036
(815) 777-2141

Johnson County
P.O. Box 546
Vienna, IL 62995
(618) 658-8264

Kane County
37W755 IL Rt. 38
St. Charles, IL 60175
(630) 208-2000

Kankakee County
3000 S. Justice Way
Kankakee, IL 60901
(815)802-7100

Kendall County
1102 Cornell Lane
Yorkville, IL 60560
(630) 553-7500

Knox County
152 S. Kellogg Street
Galesburg, IL 61401
(309) 345-3733

Lake County
25 S. Martin Luther King, Jr. Ave.
Waukegan, IL 60085
(847) 377-4050

LaSalle County
707 Etna Road
Ottawa, IL 61350
(815) 433-2161

Lawrence County
1306 Lexington
Lawrenceville, IL 62439
(618) 943-8094

Lee County
240 E. Progress Street
Dixon, IL 61021
(815) 284-5217

Livingston County
112 W. Lincoln Street
Pontiac, IL 61764
(815) 844-2774

Logan County
601 Broadway
Lincoln, IL 62656
(217) 732-2156

Macon County
333 S. Franklin Street
Decatur, IL 62523
(217) 424-1332

Macoupin County
215 S. East Street
Carlinville, IL 62626
(217) 854-3135

Madison County
405 Randle Street
Edwardsville, IL 62025
(618) 692-6087

Marion County
204 N. Washington
Salem, IL 62881
(618) 548-2141

Marshall County
520 6th Street
Lacon, IL 61540
(309) 246-2115

Mason County
102 W. Market Street
Havana, IL 62644
(309) 543-2231

Massac County
519 Market Street
Metropolis, IL 62960
(618) 524-2912

McDonough County
110 S. McArthur St.
Macomb, IL 61455
(309) 833-2323

McHenry County
2200 N. Seminary Ave.
Woodstock, IL 60098
(815) 338-4715

McLean County
104 W. Front Street
Bloomington, IL 61702
(309) 888-5034

Menard County
315 South 6th Street
Petersburg, IL 62675
(217) 632-2273

Mercer County
906 S.W. Third Street
Aledo, IL 61231
(309) 582-5194

Monroe County
225 East Third Street
Waterloo, IL 62298
(618) 939-8651

Montgomery County
140 N. Main
Hillsboro, IL 62049
(217) 532-9511

Morgan County
300 West Court
Jacksonville, IL 62650
(217) 245-4143

Moultrie County
1505 W. Hagerman Rd.
Sullivan, IL 61951
(217) 728-4386

Ogle County
202 S. 1st Street
Oregon, IL 61061
(815) 732-6666

Peoria County
301 N. Maxwell Road
Peoria, IL 61604
(309) 607-7858

Perry County
12 E. Water Street
Pinckneyville, IL 62274
(618) 357-5212

Piatt County
1216 Raymond Rd.
Monticello, IL 61856
(217) 762-7822

Pike County
204 East Adams St.
Pittsfield, IL 62363
(217) 285-0511

Pope County
216 E. Decatur Street
Golconda, IL 62938
(618) 683-4321

Pulaski County
500 Illinois Ave.
Mound City, IL 62963
(618) 748-9374

Putnam County
120 North 4th Street
Hennepin, IL 61327
(815) 925-7084

Randolph County
200 West Buena Vista
Chester, IL 62233
(618) 826-5484

Richland County
211 West Market Street
Olney, IL 62450
(618) 395-7481

Rock Island County
1317 3rd Avenue
Rock Island, IL 61201
(309) 558-3456

Saline County
1 N. Main Street
Harrisburg, IL 62946
(618) 252-8661

Sangamon County
1 Sheriff's Plaza
Springfield, IL 62701
(217) 753-6855

Schuyler County
216 W. Lafayette
Rushville, IL 62681
(217) 322-4366

Scott County
101 E. Market Street
Winchester, IL 62694
(217) 742-3141

Shelby County
151 N. Morgan Street
Shelbyville, IL 62565
(217) 774-3941

St. Clair County
700 North 5th Street
Belleville, IL 62220
(618) 277-3505

Stark County
130 W. Jefferson
Toulon, IL 61483
(309) 286-2541

Stephenson County
15 N. Galena Ave.
Freeport, IL 61032
(815) 235-8290

Tazewell County
101 S. Capitol
Pekin, IL 61554
(309) 478-5607

Union County
309 West Market Street
Jonesboro, IL 62952
(618) 833-5500

Vermilion County
2 E. South Street
Danville, IL 61832
(217) 442-4080

Wabash County
120 E. 4th Street
Mt. Carmel, IL 62863
(618) 262-2706

Warren County
121 N. "A" Street
Monmouth, IL 61462
(309) 734-8505

Washington County
245 N. Kaskaskia Street
Nashville, IL 62263
(618) 327-8273

Wayne County
305 E. Court Street
Fairfield, IL 62837
(618) 842-663

White County
108 North Main Cross
Carmi, IL 62821
(618) 382-5321

Whiteside County
400 N. Cherry Street
Morrison, IL 61270
(815) 772-4044

Will County
16911 West Laraway Rd.
Joliet, IL 60433
(815) 727-8798

Williamson County
200 West Jefferson St.
Marion, IL 62759
(618) 997-6541

Winnebago County
420 West State Street
Rockford, IL 61101
(815) 987-5426

Woodford County
111 East Court Street
Eureka, IL 61530
(309) 467-2375

EXPERTS/CONSULTANTS

For more information, click on the company name to
be directed to their website

CATASTROPHE RESPONSE /THIRD PARTY ADMINISTRATORS

[Chicago Midwest Claims, Inc.](#)

An Independent Adjusting Company
19730 Governor Hwy, Ste 3
Flossmoor, IL 60422
Office: (708) 798-8970
Fax: (708) 798-8975

[Crawford & Company](#)

Third Party Administration
1900 E. Golf Road
Schaumburg, IL 60173
Office: (847) 517-4175
Toll Free: (877) 346-0300
Transportation Claims: (866) 420-1689

ACCIDENT RECONSTRUCTIONISTS

[Foresight Reconstruction, Inc.](#)

Research and Consulting
5901 Lincoln Ave.
Morton Grove, IL 60053
Office: (312) 322-4600
Fax: (312) 322-4601

[Engineering Systems Inc.](#)

Engineering and Scientific Investigation & Analysis
4215 Campus Dr.
Aurora, IL 60504
Office: (630) 851-4566
Fax: (630) 851-4870

[Exponent, Inc.](#)

Engineering & Scientific Consulting
525 W. Monroe St., Suite 1050
Chicago, IL 60661
Office: (312) 999-4200

FIRE EXPLOSION CAUSATION & ORIGIN ENGINEERS

[SEA, Ltd.](#)

Forensic Engineering Services
5600 Apollo Dr., Suite 100
Rolling Meadows, IL 60008
Toll Free: (888) 597-5084

[Engineering Systems Inc.](#)

Engineering and Scientific Investigation & Analysis
4215 Campus Dr.
Aurora, IL 60504
Office: (630) 851-4566
Fax: (630) 851-4870

ELECTRICAL CAUSATION ORIGIN & ELECTRICAL ENGINEERS

[SEA, Ltd.](#)

Forensic Engineering Services
5600 Apollo Dr., Suite 100
Rolling Meadows, IL 60008
Toll Free: (888) 597-5084

TOXICOLOGISTS

Jerrold B. Leikin, M.D.
Director of Medical Toxicology
2150 Pfingsten Rd, Suite 3000
Glenview, IL 60026
Office: (847) 657-1700

CARGO THEFT INVESTIGATIONS

[CargoNet](#)

Theft Prevention & Recovery Solutions
545 Washington Blvd.
Jersey City, NJ 07310
(888) 595-2638

HAZMAT CLEAN-UP

[Spill Center](#)

1 Cabot Rd., Suite 200
Hudson, MA 01749
(978) 568-1922
24 Hrs. (800) 456-9038
Fax: (978) 568-1945

INTERPRETERS

[Interprenet](#)

27 N. Wacker Drive, Suite 270
Chicago, IL 60606
Office: (312) 928-1188

TRAFFIC CRASH INVESTIGATION and SAFETY ENGINEERING

[Northwestern Center for Public Safety](#)

*Courses and programs for law enforcement, crash investigators, traffic
engineers, and other public safety professionals*
405 Church Street
Evanston, IL 60201
Office: (847) 491-5476
Toll Free: (800) 323-4011

INVESTIGATION CHECKLIST

Major Accidents Involving Commercial Motor Vehicles

FORESIGHT reconstruction, inc.® developed this checklist to provide guidance to those responsible for managing first response investigations of major accidents involving commercial motor vehicles. **REPORTS & RECORDS** are obtained from several sources including police, drivers, motor carriers, newspapers, TV, EMS and others. For major accidents, the prompt assistance of an accident reconstruction specialist is usually warranted to conduct inspections of the **ACCIDENT SITE** and **VEHICLES**, to lead the preliminary accident analysis, to assess the need for continued investigation and to prepare for reconstruction analysis if and when requested.

IMPORTANT: While this checklist is comprehensive, it is neither exhaustive nor intended to be a standard investigation protocol. Since every accident is unique, some items will apply, some will not, some may not be on this list and some may remain unknown until additional information becomes available. Some items may not be current (i.e. advances in electronic data recorder technology). Although investigations should be expedited, postponing certain activities until additional information becomes available and/or other concerned parties are present may be appropriate. **AVOID SPOILIATION / DESTRUCTIVE TESTING.**

REPORTS & RECORDS:

- Photographs & statements taken by attorneys or claims investigators;** Respect attorney-client and work-product privileges.
- Police report;** supplemental reports; photographs; videotape; field notes; accident reconstruction report; total station surveys.
- Electronic data from all vehicles extracted by police or any other parties;** ECM, SDM and/or ABS.
- DOT Commercial Driver/Vehicle Inspection report** (49CFR396.9).
- State traffic citations and DOT Federal Motor Carrier Safety Regulation (FMCSR) violations.**
- Driver's drug & alcohol test results** (49CFR392.4 and 392.5).
- Driver's Commercial Driver's License (CDL).**
- Weight scale ticket and bill of lading.**
- Driver's record of duty status;** log book (49CFR395.8).
- Recent Qualcomm satellite system data reports.**
- Motor carrier's dispatch log.**
- Towing/wrecker/recovery service** receipts & photographs tow truck driver may have taken.
- Newspaper & TV station photographs & videotape** (surface and aerial photos).
- Coroner's report and photographs.**
- EMS & emergency room reports** re: injuries, witness statements & evidence of seat belt usage.
- Recent driver post-trip vehicle inspection reports** (49CFR396.11).
- Periodic (annual) inspection report;** Minimum Periodic Inspection Standards (49CFR396.17 & Appendix G).
- Recent inspection, repair & maintenance records including random roadside inspection** (49CFR396.3).
- Description / color of clothing & shoes for nighttime pedestrian accidents;** Preserve clothing and shoes.
- Driver's cell phone records from time of accident may need to eventually be obtained.**

ACCIDENT SITE:

- Locate accident site;** Closest street address, intersections, overpasses, exit numbers, land marks, mile markers, GPS, etc; See mapquest.com, maps.google.com, maps.live.com, terraser.com, terraser-usa.com, etc. for maps and aerial photographs.
- Retain aerial photographs to be used for localities, vertical and oblique photographs of accident site and close-ups of evidence: 2nd choice: "aerial surveyor" with 9" x 9" film or digital mapping camera in belly of airplane; 1000' AGL min; These are high resolution and excellent for scaling and zooming in on details; Best for verticals but useful oblique views are difficult to photograph with this method. 3rd choice: aerial photographer with professional camera equipment from side window of airplane; 1000' AGL min; Last choice because close-ups and true vertical photographs needed for scaling cannot be obtained through the side window of an airplane at 1000' AGL; However, this service is the least expensive and most commonly available on short notice.**
- Inspect & photograph accident site ASAP, before evidence weathers away under rain, snow and traffic (Within a day or two when possible - Not weeks!)** Accident reconstructionist or experienced vehicle accident investigator should know what to look for and photograph or videotape; Use professional camera equipment.
- Apply scale marks along shoulders or foglines with WHITE striping paint** every 100', 50' or 25' as needed in each relevant direction for scaling of aerial photographs; Make scale marks about 5" x 15" with inverted spray can striping paint.
- Mark location of inconspicuous evidence with striping paint** to enhance location in aerial photographs.
- Map accident site with survey equipment or manually with measuring wheel & tape** in lieu of aerial photography; Required in addition to aerial photography if road or off-road elevation measurements are relevant to accident analysis.
- Videotape and/or photograph while driving toward area of impact** for each relevant direction during similar visibility conditions; Photograph speed limit and advisory speed signs and other advance signage on the approaches.
- Evaluate visibility for twilight/nighttime accidents** before natural & artificial lighting has changed; Request authorities or others to participate in evaluation; Photographs taken to record visibility for evidentiary purposes must be taken by qualified photographer.
- Videotape traffic signal sequencing & timing;** Simultaneous recording of both relevant directions with the same camera is useful.
- Videotape and/or photograph ASAP advance construction zone traffic control devices & signage** before they are moved.
- Videotape and/or photograph any relevant line-of-sight obstructions** such as hills, curves, buildings, signs and especially parked vehicles, trees, bushes and other foliage before they change; Measure location and height of camera lens.
- Search for, measure & photograph potentially related potholes, shoulder drop-offs, loose gravel and bumps.**



VEHICLES:

- Locate all involved vehicles:** Identify contact person/phone number & obtain permission for inspections.
- Identify involved vehicles** make, model, year, color, fleet number, engine manufacture & salvage yard stock number.
- Driveable tractors should not be driven; DO NOT** start engine or drive tractor after the accident until ECM has been downloaded; Driving will delete last stop and may delete hard stop records; If tractor is still at the accident scene and police permit, remove key, remove drive shafts, release parking spring brakes with external air or caging (**DO NOT back off slack adjusters on tractor or trailer**), then tow to off-road location for downloading.
- Move client's vehicle to secure location until inspections have been completed.**
- Tag vehicles "Out of Service";** Vehicles must be stored and preserved for a reasonable length of time to give all parties an opportunity to inspect and agree to release.
- Vehicles MUST NOT be repaired or have parts removed or adjusted; AVOID SPOILIATION / DESTRUCTIVE TESTING.**
- "BLACK BOX" downloading including ECM's, SDM's, ABS, etc.:** **DO NOT** download data recorder from other party's vehicle without owner's permission; Depending on accident damage, data recorder may need to be removed, preserved & downloaded on a later date; Photograph or videotape download and removal; Obtain both hardcopy and CD or other electronic record of extracted data; Note: Downloading after removal may cause the disconnected sensor circuits to appear as false fault codes.
- Download Truck Engine ECM (Electronic Control Module, "Black Box") by accident reconstructionist or qualified local dealer technician:** Record odometer mileage to compare with ECM mileage; Record local time corresponding to ECM clock at time of download; Record drive axle tire sizes and differential ratio displayed on tire sidewalls and differential housing.
 - Detroit Diesel** DDEC IV & V have "last stop" and 2 last "hard brake" records since 1997; Extract from Deutsch connector in cab.
 - Caterpillar** has 2 last "quick stop" records since 1996; Quick stop record feature: disabled is factory standard; enabled is optional; Extract from Deutsch connector in cab.
 - Mack** has 2 last "vehicle incident reports" since 1997 on some models and 2000 on all models; Engine ECU and Vehicle ECU must be removed and shipped to Mack Truck for download.
 - Cummins** ISX engines record 3 sudden deceleration records since 2005, download with Cummins "PowerSpec" & "INSITE" software; also, dash option called RoadRelay III and IV (not a common option) records incident data since 1995; May have up to 5 sudden deceleration records; **DO NOT** remove RoadRelay from tractor; Download with Cummins "Inform" software.
 - Mercedes Benz** same as Detroit except Mercedes has two-piece system; Engine PLD & in cab DCU since 2002.
 - Volvo** engine electronic control units do not record incident data per Volvo Trucks North America, Aug, 2005.
- Download Airbag Control Module from passenger vehicles for velocity & braking data;** Check boschdiagnostics.com for list of vehicles supported by Crash Data Retrieval System (CDR); GM since late 1990's, Ford since early 2000's & Chrysler since 2005; Most Japanese and European modules are not currently downloadable by independents; Consider removing and preserving module before vehicle is repaired or salvaged.
- Download ABS Control Module** fault codes with ABS diagnostic software (e.g. Bendix ACom, Meritor Toolbox, LINK-Radlinski); ABS req'd. on truck tractors mfd. since March, 1997 and on other air braked CMV's mfd. since March, 1998 (49CFR393.55).
- Download Eaton VORAD (Vehicle On-board Radar);** Optional system may have incident records; VORAD control module must be returned to Eaton for download; VORAD is not a common option.
- Inspect and photograph all involved vehicles;** Accident reconstructionist should know what to look for and photograph.
- Search interior of vehicles for alcoholic beverage containers, drugs and cell phones;** photograph in situ.
- Measure tractor/trailer overall length, overall width, axle spacing** and other potentially relevant dimensions.
- Measure impact crush damage of passenger cars, vans, pickups** for EDSMAC, EDCRASH or other speed analysis.
- Determine if drivers claim mechanical problems;** Visually inspect vehicles for any claimed defects; A more comprehensive inspection with testing and disassembly may be required at later date with all parties present.
- Test function of air brake system & measure stroke;** Review DOT brake inspection results when available; Do not start engine for testing until after ECM has been downloaded; Mechanic & parts may be needed to repair accident damaged air brake system for testing; If pre-accident damage is found, **DO NOT REPAIR** for testing; To charge air reservoirs, start engine or use an external air supply; Air pressure = 80 to 90 psi **with brakes applied** for stroke measurements (See 49CFR Appendix G to Subchapter B and CVSA North American Standard Out of Service Criteria); Record application pressure at time of stroke measurements; AVOID SPOILIATION / DESTRUCTIVE TESTING.
- Determine air chamber type/size; std. stroke or long stroke (L); manual or automatic slack adjusters;** automatic brake slack adjusters and under-adjustment indicators required on air braked CMV's mfd. since Oct, 1994 (49CFR393.53).
- Measure & photograph abnormal tractor & trailer brake lining thickness** and cracks or missing sections around inboard edges.
- Photograph any visible abnormal brake drum condition** such as oil, rust or cracks.
- Record transmission manufacture, model, automatic or manual** and number of forward speeds.
- Photograph tread pattern width and condition of all tires;** Measure tire pressure and tread depth if potentially relevant to accident.
- Photograph cargo, dunnage & tie down devices** especially for truck rollover accidents; Record rating/capacity and condition of securement systems including steel strapping, chains, hooks, load binders, cables, webbing, cordage, front-end structures, etc.
- Thoroughly examine vehicle for subtle dents, cracks in plastic or glass & trace blood, hair, fabric, scratches and smears in road film, etc.** around and under vehicle for pedestrian accidents.
- Inspect and photograph lamps on client's vehicle;** Condition of lamp filaments within or proximate to collision damaged area may indicate whether they were "on" or "off" at the time of impact; Close-up photography is required; **DO NOT** turn on power to test lamp circuits; Depending on damage, power may alter post-impact condition of filaments, wiring and fuses; Operation of light circuits for testing may be considered only if their condition will not be altered; Accident reconstructionist must advise as to what is appropriate for each specific case; Consider testing with other parties present and in agreement; AVOID SPOILIATION / DESTRUCTIVE TESTING.
- Inspect and photograph lamps in other parties vehicles; DO NOT** test or remove without owner's permission.
- Remove and preserve relevant lamps from client's vehicle;** Request participation of other interested parties; Mark location of lamps and photograph before removal; Do not clean dirt off glass bulbs or lens; Exposed lamp filaments are fragile and must be carefully removed and protected; Accident reconstructionist should do this ASAP to avoid additional exposure to weathering and handling; Sealed lamp modules should be opened with other parties present; AVOID SPOILIATION / DESTRUCTIVE TESTING.



Event Data Recorder Supported Vehicles

Click here for most up to date search:

[EDR Supported Vehicle Lookup | EDR Vehicle Lookup \(edrsupportedvehicles.com\)](http://EDR Supported Vehicle Lookup | EDR Vehicle Lookup (edrsupportedvehicles.com))

SUPPORTED COMMERCIAL VEHICLE ENGINES

1997-2020 Detroit Diesel
2000-2020 Mercedes Benz
1997-2010 Caterpillar
1999-2020 Cummins
2010-2020 International
1998-2020 Mack
2010-2020 PACCAR
2006-2020 Volvo

Alfa Romeo

2015-2021 Alfa Romeo 4C
2017-2021 Alfa Giulia
2018-2021 Alfa Stelvio

SUPPORTED AUDI VEHICLES

Audi

2019-2021 Audi A1
2015-2021 Audi A3
2015-2021 Audi A4
2015-2021 Audi A5
2015-2021 Audi A6
2015-2021 Audi A7
2015-2021 Audi A8
2019-2021 Audi e-tron
2017-2021 Audi R8
2018-2021 Audi RS3
2015-2017 Audi RS5
2019-2021 Audi RS5
2015-2021 Audi RS7
2015-2021 Audi S3
2017-2021 Audi S4
2015-2021 Audi S5
2015-2021 Audi S6
2015-2021 Audi S7
2015-2021 Audi S8
2018-2021 Audi Q2
2015-2021 Audi Q3
2017-2021 Audi Q5, SQ5
2017-2021 Audi Q7
2018-2021 Audi Q8

SUPPORTED BENTLEY VEHICLES

Bentley

2016-2021 Bentley Continental
2016-2021 Bentley Flying Spur
2016-2018 Bentley Mulsanne
2017-2021 Bentley Bentayga

SUPPORTED BMW VEHICLES

BMW

2014-2021 BMW 2 Series
2013-2021 BMW 3 Series
2014-2021 BMW 4 Series
2013-2021 BMW 5 Series
2013-2020 BMW 6 Series
2013-2021 BMW 7 Series
2019-2021 BMW 8 Series
2015-2018 BMW Alpina B6
2014 BMW Alpina B7
2017-2018 BMW Alpina B7
2014-2021 BMW i3
2014-2020 BMW i8
2015-2018 BMW M3
2015-2018 BMW M4
2013-2018 BMW M5
2013-2017 BMW M6
2015-2021 BMW X1
2018-2021 BMW X2
2013-2021 BMW X3
2015-2021 BMW X4
2014-2018 BMW X5
2020-2021 BMW X5
2015-2019 BMW X6
2021 BMW X6
2019-2021 BMW X7
2015-2016 BMW Z4
2019-2021 BMW Z4

SUPPORTED CHRYSLER VEHICLES

Chrysler

2011-2017 Chrysler 200
2006-2021 Chrysler 300
2007-2009 Chrysler Aspen
2009-2010 Chrysler Cirrus
2021 Chrysler Grand Caravan
2008-2011 Chrysler Grand Voyager
2007-2008 Chrysler Pacifica
2017-2021 Chrysler Pacifica
2007-2010 Chrysler PT Cruiser

2007-2010 Chrysler Sebring
2008-2016 Chrysler Town & Country
2020-2021 Chrysler Voyager

Dodge

2008-2014 Dodge Avenger
2007-2012 Dodge Caliber
2008-2020 Dodge Caravan/
Grand Caravan
2008-2021 Dodge Challenger
2006-2021 Dodge Charger
2007-2011 Dodge Dakota
2012 Dodge Dakota
(Mexico)
2013-2016 Dodge Dart
2005-2009 Dodge Durango
2011-2021 Dodge Durango
2009-2020 Dodge Journey
2006-2008 Dodge Magnum
2007-2012 Dodge Nitro
2006-2009 Dodge Ram 1500,
2500, 3500, 4000,
4500, 5500 (includes
incomplete/cab &
chassis)
2013-2017 Dodge Viper

Jeep

2006-2010 Jeep Commander
2007-2020 Jeep Compass
2006-2021 Jeep Grand Cherokee
2008-2013 Jeep Liberty/
Cherokee
2014-2021 Jeep Cherokee
2020-2021 Jeep Gladiator
2007-2017 Jeep Patriot
2015-2021 Jeep Renegade
2007-2021 Jeep Wrangler

Ram

2020 Ram 1500
2010-2021 Ram 1500, 2500,
3500, 4000, 4500,
5500 (includes
incomplete/cab &
chassis)
2012-2015 Ram Cargo Van
2014-2020 Ram ProMaster
2015-2021 Ram ProMaster City

SUPPORTED FIAT VEHICLES

Fiat

2017-2019 Fiat 124 Spider
2012-2019 Fiat 500
2014-2020 Fiat 500L
2016-2021 Fiat 500X
2011-2017 Fiat Freemont

Lancia

2012-2013 Lancia Flavia
2012-2015 Lancia Grand Voyager
2012-2014 Lancia Thema

SUPPORTED FORD VEHICLES

Ford

2005-2007 Ford 500
2001-2011 Ford Crown Victoria
2013-2018 Ford C-Max
2005-2021 Ford Econoline
2018-2021 Ford EcoSport
2007-2020 Ford Edge
2001-2004 Ford Escape
2009-2021 Ford Escape
2001-2002 Ford Escort
2018 Ford Escort
2001-2005 Ford Excursion
2001-2002 Ford Expedition
2005-2007 Ford Expedition
2011-2021 Ford Expedition
2001-2002 Ford Explorer
2004-2021 Ford Explorer
2001-2002 Ford Explorer Sport
(2 door)
2001-2002 Ford Explorer Sport
Trac (pickup)
2006-2010 Ford Explorer Sport
Trac (pickup)
2001-2021 Ford F150
2004 Ford F150 (Heritage)
2001-2007 Ford F250, F350,
F450, F550 Super
Duty
2011-2021 Ford F250, F350,
F450, F550, 2020
Ford F600
2011-2019 Ford Fiesta
2010-2019 Ford Flex
2008-2018 Ford Focus
2005-2007 Ford Freestyle

**SUPPORTED FORD VEHICLES,
cont.**

2006-2007 Ford Fusion
 2010-2020 Ford Fusion
 2017-2021 Ford GT
 2001-2007 Ford Mustang
 2010-2021 Ford Mustang
 2001-2006 Ford Ranger
 2010-2011 Ford Ranger
 2019-2020 Ford Ranger
 2001 Ford Taurus
 2010-2019 Ford Taurus
 2002-2005 Ford Thunderbird
 2015-2020 Ford Transit
 2013-2021 Ford Transit Connect
 2001-2003 Ford Windstar

Lincoln

2020-2021 Lincoln Aviator
 2001-2002 Lincoln Continental
 2017-2020 Lincoln Continental
 2020-2021 Lincoln Corsair
 2001-2006 Lincoln LS 2006
 Lincoln Mark LT
 2015-2019 Lincoln MKC
 2010-2016 Lincoln MKS
 2010-2019 Lincoln MKT
 2007-2018 Lincoln MKX
 2007 Lincoln MKZ
 2010-2020 Lincoln MKZ
 2019-2020 Lincoln Nautilus
 2001-2002 Lincoln Navigator
 2005-2007 Lincoln Navigator
 2011-2021 Lincoln Navigator
 2001-2011 Lincoln Town Car
 2006 Lincoln Zephyr

Mercury

2001-2011 Mercury Grand
 Marquis
 2003-2004 Mercury Marauder
 2009-2011 Mercury Mariner
 2006-2007 Mercury Milan
 2010-2011 Mercury Milan
 2005-2007 Mercury Montego
 2004-2010 Mercury Mountaineer
 2001 Mercury Sable

SUPPORTED GM VEHICLES**AVGM**

2020-2021 AVGM AV1

Buick

2005-2010 Buick Allure
 2016-2019 Buick Cascade
 1997-2005 Buick Century
 1994-1996 Buick Commercial
 2008-2021 Buick Enclave
 2013-2021 Buick Encore
 2015-2021 Buick Envision
 2005-2020 Buick Lacrosse
 1995-2005 Buick Le Sabre
 2006-2011 Buick Lucerne
 1995-2005 Buick Park Avenue
 2004-2008 Buick Rainier
 1995-2021 Buick Regal
 2002-2007 Buick Rendezvous
 1996-1999 Buick Riviera
 1994-1996 Buick Roadmaster
 1996-1998 Buick Skylark
 2005-2008 Buick Terraza
 2012-2017 Buick Verano

Cadillac

2013-2019 Cadillac ATS
 1994-2007 Cadillac Commercial
 1995-1997 Cadillac Concourse
 2020-2021 Cadillac CT4
 2020-2021 Cadillac CT5
 2016-2020 Cadillac CT6
 2003-2019 Cadillac CTS
 1994-2005 Cadillac Deville
 2006-2011 Cadillac DTS
 1995-2002 Cadillac Eldorado
 1999-2000 Cadillac Escalade
 2002-2021 Cadillac Escalade
 2015-2017 Cadillac ELR
 2004-2005 Cadillac EXT
 1994-1996 Cadillac Fleetwood
 2008-2011 Cadillac Hearse (DTS)
 2008-2011 Cadillac Limo (DTS)
 2013-2015 Cadillac Limo/Funeral
 Coach
 1995-2004 Cadillac Seville
 2005 Cadillac SLS
 2007-2012 Cadillac SLS
 2004-2016 Cadillac SRX
 2005-2011 Cadillac STS
 2019-2021 Cadillac XT4
 2017-2021 Cadillac XT5
 2020-2021 Cadillac XT6
 2003-2009 Cadillac XLR Roadster
 2013-2019 Cadillac XTS

Chevrolet

1996-2005 Chevrolet Astro
 2002-2013 Chevrolet Avalanche
 2009-2020 Chevrolet Aveo

1998-2005 Chevrolet Blazer
 2019-2021 Chevrolet Blazer
 2017-2021 Chevrolet Bolt EV
 1999-2001 Chevrolet C/K pickup
 1996-2002 Chevrolet Camaro
 2010-2021 Chevrolet Camaro
 1994-1996 Chevrolet Caprice
 2011-2017 Chevrolet Caprice
 (Police)
 2008-2018 Chevrolet Captiva
 1996-2005 Chevrolet Cavalier
 2008 Chevrolet Cheyenne
 2015-2019 Chevrolet City
 Express
 2004-2005 Chevrolet Classic
 2005-2010 Chevrolet Cobalt
 2004-2012 Chevrolet Colorado
 2015-2021 Chevrolet Colorado
 1994-1996 Chevrolet
 Commercial
 1997-2021 Chevrolet Corvette
 2010-2020 Chevrolet Cruze
 2005-2021 Chevrolet Equinox
 1996-2021 Chevrolet Express
 2006-2011 Chevrolet HHR
 1995-1996 Chevrolet Impala
 2000-2020 Chevrolet Impala
 2003-2009 Chevrolet Kodiak
 2019 Chevrolet Low Cab
 Forward
 1995-2001 Chevrolet Lumina
 1997-2021 Chevrolet Malibu
 2012 Chevrolet Matiz
 1998-2001 Chevrolet Metro
 1995-2007 Chevrolet Monte
 Carlo
 2012-2014 Chevrolet Orlando
 1998-2004 Chevrolet S10
 1997-2021 Chevrolet Silverado
 2012-2020 Chevrolet Sonic
 2013-2021 Chevrolet Spark
 1997-2021 Chevrolet Suburban
 2015-2017 Chevrolet SS
 2003-2006 Chevrolet SSR
 1997-2021 Chevrolet Tahoe
 1998-2004 Chevrolet Tracker
 2015-2016 Chevrolet Tracker
 2018-2020 Chevrolet Tracker
 2002-2009 Chevrolet Trailblazer
 2021 Chevrolet Trailblazer
 2009-2021 Chevrolet Traverse
 2013-2021 Chevrolet Trax
 2005-2009 Chevrolet Uplander
 1997-2005 Chevrolet Venture
 2011-2020 Chevrolet Volt

Geo

1995-1997 Geo Metro
 1996-1997 Geo Tracker

GM

1997-1999 GM EV1

GMC

2007-2020 GMC Acadia
 1999-2001 GMC C/K Pickup
 2004-2012 GMC Canyon
 2015-2020 GMC Canyon
 2002-2009 GMC Envoy
 1998-2005 GMC Jimmy
 1996-2005 GMC Safari
 1996-2019 GMC Savana
 1997-2020 GMC Sierra
 1998-2004 GMC Sonoma
 2010-2020 GMC Terrain
 2003-2009 GMC Top Kick
 1997-2019 GMC Yukon
 2001-2005 GMC Yukon XL

HSV

2007-2017 HSV Clubsport
 2007-2017 HSV Grange
 2007-2017 HSV GTS
 2007-2017 HSV Senator

Hummer

2003-2010 Hummer H2
 2006-2010 Hummer H3
 2009-2010 Hummer H3T

Oldsmobile

1996-1998 Olds Achieva
 1996-1999 Olds LSS
 1999-2004 Olds Alero
 1996-1999 Olds Aurora
 2001-2003 Olds Aurora
 1998-2004 Olds Bravada
 1998-1999 Olds Cutlass
 1995-1997 Olds Cutlass Supreme
 1995-1999 Olds Eighty Eight
 1998-2002 Olds Intrigue
 1995-1996 Olds Ninety Eight
 1997-1998 Olds Regency
 1997-2004 Olds Silhouette

Pontiac

2001-2005 Pontiac Aztek
 1995-2005 Pontiac Bonneville
 1996-2002 Pontiac Firebird
 1995-2001 Pontiac Firefly

SUPPORTED GM VEHICLES, cont.

2009-2010 Pontiac G3
 2007-2010 Pontiac G5
 2005-2010 Pontiac G6
 2008-2010 Pontiac G8
 1996-2005 Pontiac Grand AM
 2007 Pontiac Grand AM
 1994-2008 Pontiac Grand Prix
 1999-2009 Pontiac Montana
 2005-2006 Pontiac Pursuit
 2006-2010 Pontiac Solstice
 1996-2005 Pontiac Sunfire
 1996-1998 Pontiac Sunrunner
 2006-2009 Pontiac Torrent
 1997-1999 Pontiac Trans Sport
 2003-2010 Pontiac Vibe
 2009-2010 Pontiac Wave

Saturn

1995-2003 Saturn All Models
 2007-2010 Saturn Aura
 2003-2007 Saturn ION
 2004-2005 Saturn L300
 2007-2010 Saturn Outlook
 2005-2007 Saturn Relay
 2007-2010 Saturn Sky
 2002-2010 Saturn VUE

SUPPORTED HONDA VEHICLES**Acura**

2013-2021 Acura ILX
 2017-2021 Acura NSX
 2012-2022 Acura MDX
 2013-2021 Acura RDX
 2012-2013 Acura RL
 2014-2020 Acura RLX
 2012-2014 Acura TL
 2012-2014 Acura TSX
 2015-2021 Acura TLX
 2012-2013 Acura ZDX

Honda

2013-2021 Honda Accord
 2012-2021 Honda Civic
 2017-2021 Honda Clarity
 2012-2015 Honda Crosstour
 2012-2021 Honda CR-V
 2012-2016 Honda CR-Z
 2012-2020 Honda Fit, Fit EV
 2016-2021 Honda HR-V
 2012-2014 Honda Insight
 2019-2021 Honda Insight
 2012-2022 Honda Odyssey

2019-2021 Honda Passport
 2012-2021 Honda Pilot
 2012-2014 Honda Ridgeline
 2017-2021 Honda Ridgeline

SUPPORTED HYUNDAI VEHICLES**Hyundai**

2013-2021 Hyundai Accent
 2013-2017 Hyundai Azera
 2013-2021 Hyundai Elantra
 2013-2016 Hyundai Equus
 2013-2016 Hyundai Genesis
 2017-2020 Hyundai Ioniq
 2018-2021 Hyundai Kona
 2019-2020 Hyundai Nexso
 2020-2021 Hyundai Palisade
 2013-2021 Hyundai Santa Fe
 2013-2021 Hyundai Sonata
 2013-2021 Hyundai Tucson
 2013-2021 Hyundai Veloster
 2020-2021 Hyundai Venue

Genesis

2019-2021 Genesis G70
 2017-2021 Genesis G80
 2017-2021 Genesis G90
 2020-2021 Genesis GV80

SUPPORTED KARMA VEHICLES**Karma**

2017-2020 Karma Revero

SUPPORTED KIA VEHICLES**Kia**

2014-2020 Kia Cadenza
 2013-2021 Kia Forte
 2021 Kia K5
 2015-2020 Kia K900
 2017-2020 Kia Niro
 2013-2020 Kia Optima
 2013-2020 Kia Rio
 2014-2021 Kia Sedona
 2021 Kia Seltos
 2013-2021 Kia Sorento
 2013-2021 Kia Soul
 2013-2021 Kia Sportage
 2018-2021 Kia Stinger
 2020-2021 Kia Telluride

SUPPORTED LAMBORGHINI VEHICLES**Lamborghini**

2015-2021 Lamborghini Aventador
 2015-2021 Lamborghini Huracan
 2021 Lamborghini Urus

SUPPORTED MASERATI VEHICLES**Maserati**

2014-2021 Maserati Ghibli
 2015-2020 Maserati Gran Turismo
 2017-2021 Maserati Levante
 2014-2021 Maserati Quattroporte

SUPPORTED MAZDA VEHICLES**Mazda**

2011-2014 Mazda 2
 2016 Mazda 2
 2012-2021 Mazda 3
 2012-2015 Mazda 5
 2011-2021 Mazda 6
 2016-2021 Mazda CX-3
 2013-2021 Mazda CX-5
 2011-2021 Mazda CX-9
 2020-2021 Mazda CX-30
 2016-2021 Mazda MX-5 Miata

SUPPORTED MERCEDES-BENZ VEHICLES**Mercedes-Benz**

2019-2021 M-B A-Class Limo
 2021 M-B A-Class Hatchback
 2016-2021 M-B AMG GT
 2014-2020 M-B B-Class
 2020-2021 M-B B-Class Limo
 2014-2019 M-B B-Class EV
 2015-2021 M-B C-Class
 2014-2019 M-B CLA-Class
 2020-2021 M-B CLA-Class Limo
 2021 M-B CLA-Class Shooting Brake
 2015-2021 M-B CLS-Class
 2014-2021 M-B E-Class
 2021 M-B EQA
 2021 M-B EQB
 2020-2021 M-B EQC
 2015-2019 M-B G-Class
 2015 M-B GL-Class

2014-2021 M-B GLA
 2021 M-B GLB-Class
 2016-2021 M-B GLC
 2016-2021 M-B GLE-Class
 2014-2015 M-B GLK
 2017-2021 M-B GLS-Class
 2019-2021 M-B GT
 2020-2021 M-B G Wagon
 2015 M-B M-Class
 2016-2017 M-B Maybach S600
 2016-2021 M-B Metris
 2014-2021 M-B S-Class
 2014-2020 M-B SL-Class
 2017-2020 M-B SLC-Class
 2014-2016 M-B SLK
 2019-2021 M-B Sprinter

Smart

2015-2020 Smart All Vehicles

SUPPORTED MINI VEHICLES**MINI**

2014 Mini Clubman
 2016-2021 Mini Clubman
 2014-2021 Mini Convertible
 2014-2021 Mini Countryman
 2014-2015 Mini Coupe
 2014-2021 Mini Hardtop
 2014-2016 Mini Paceman
 2014-2015 Mini Roadster

SUPPORTED MITSUBISHI VEHICLES**MITSUBISHI**

2011-2019 Mitsubishi ASX
 2018-2019 Mitsubishi Eclipse Cross
 2014-2019 Mitsubishi Outlander
 2011-2019 Mitsubishi Outlander Sport
 2007-2010 Mitsubishi Raider
 2011-2019 Mitsubishi RVR

SUPPORTED NISSAN VEHICLES**Infiniti**

2007-2012 Infiniti All Vehicles - Coordinate with Nissan USA for Download
 2013 Infiniti EX
 2013 Infiniti FX
 2013 Infiniti G
 2012 Infiniti G25 Sedan

SUPPORTED NISSAN VEHICLES, cont.

2013	Infiniti JX35
2013	Infiniti M
2015	Infiniti Q40
2014-2020	Infiniti Q50
2014-2020	Infiniti Q60
2014-2019	Infiniti Q70
2013	Infiniti QX
2017-2020	Infiniti QX30
2014-2020	Infiniti QX50
2014-2020	Infiniti QX60
2014-2017	Infiniti QX70
2014-2020	Infiniti QX80

Nissan

2007-2012	Nissan All Vehicles - Coordinate with Nissan USA for Download
2013-2020	Nissan 370Z
2013-2020	Nissan Altima
2013-2015	Nissan Armada
2017-2020	Nissan Armada
2013-2014	Nissan Cube
2012-2019	Nissan Frontier
2014-2020	Nissan GT-R
2013-2017	Nissan Juke
2019-2020	Nissan Kicks
2013-2020	Nissan Leaf
2013-2020	Nissan Maxima
2015-2019	Nissan MICRA (Canada Only)
2013-2020	Nissan Murano
2013-2020	Nissan NV
2013-2020	Nissan NV200
2013-2020	Nissan Pathfinder
2017-2020	Nissan Qashqai (Canada Only)
2013-2017	Nissan Quest
2013-2020	Nissan Rogue
2019-2020	Nissan Rogue Sport
2013-2020	Nissan Sentra
2013-2020	Nissan Titan
2012	Nissan Versa Hatchback
2013-2016	Nissan Versa Sedan
2018-2020	Nissan Versa Sedan
2014-2019	Nissan Versa Note
2012-2015	Nissan Xterra

SUPPORTED PORSCHE VEHICLES**Porsche**

2019-2021	Porsche Taycan
-----------	----------------

SUPPORTED ROLLS ROYCE VEHICLES**Rolls-Royce**

2019-2021	Rolls-Royce Cullinan
2017-2021	Rolls-Royce Dawn
2013-2021	Rolls-Royce Ghost
2014-2021	Rolls-Royce Phantom
2014-2021	Rolls-Royce Wraith

SUPPORTED SUBARU VEHICLES**Subaru**

2019-2020	Subaru Ascent
2013-2021	Subaru Crosstrek
2013-2021	Subaru Forester
2012-2021	Subaru Impreza
2013-2018	Subaru Legacy
2015-2019	Subaru Levorg
2013-2018	Subaru Outback
2020-2021	Subaru Outback
2015-2018	Subaru WRX
2012-2021	Subaru VX

SUPPORTED SUZUKI VEHICLES**Suzuki**

2012-2013	Suzuki Equator
2013-2014	Suzuki Grand Vitara
2013-2014	Suzuki Kizashi
1995-2001	Suzuki Swift
1996-1998	Suzuki Sidekick
2013-2014	Suzuki SX4
1999-2004	Suzuki Vitara
2007-2010	Suzuki XL-7

SUPPORTED TESLA VEHICLES**Tesla**

All	Tesla Model 3
All	Tesla Model S
All	Tesla Model X
All	Tesla Model Y

SUPPORTED TOYOTA VEHICLES**Lexus**

2010-2017	Lexus CT200h
2001-2017	Lexus ES
2000-2017	Lexus GS
2015-2017	Lexus GS-F
2002-2017	Lexus GX
2009-2017	Lexus HS

2005-2017	Lexus IS
2007-2014	Lexus IS-F
2018	Lexus LC
2010-2012	Lexus LF-A
2001-2021	Lexus LS
2002-2017	Lexus LX
2014-2017	Lexus NX
2014-2017	Lexus RC 350
2014-2017	Lexus RC-F
2003-2017	Lexus RX
2001-2010	Lexus SC

Scion

2012-2016	Scion FR-S
2016	Scion iA
2015-2016	Scion iM
2009-2016	Scion iQ
2004-2016	Scion tC
2003-2016	Scion xA
2003-2016	Scion xB
2003-2016	Scion xD

Toyota

2002-2021	Toyota 4Runner
2019-2020	Toyota 86
2002-2021	Toyota Avalon
2016-2021	Toyota C-HR
2001-2021	Toyota Camry
2003-2007	Toyota Camry/Solara
2003-2021	Toyota Corolla
2003-2012	Toyota Echo
2007-2014	Toyota FJ Cruiser
2004-2021	Toyota Highlander
2003-2021	Toyota Land Cruiser
2003-2014	Toyota Matrix
2014-2021	Toyota Mirai
2004-2021	Toyota Prius - includes plug-in
2003-2021	Toyota Rav4
2004-2021	Toyota Sequoia
2003-2021	Toyota Sienna
2020-2021	Toyota Supra
2005-2021	Toyota Tacoma
2005-2021	Toyota Tundra
2008-2021	Toyota Venza
2002-2021	Toyota Yaris

SUPPORTED VOLKSWAGEN VEHICLES**Volkswagen**

2018-2021	Volkswagen Arteon
2018-2021	Volkswagen Atlas
2015-2021	Volkswagen Beetle
2015-2017	Volkswagen CC

2018-2021	Volkswagen Crafter
2014-2016	Volkswagen EOS
2015-2021	Volkswagen Golf, eGolf
2015-2016	Volkswagen GTI
2015-2021	Volkswagen Jetta
2020-2021	Volkswagen Neo
2015-2021	Volkswagen Passat
2018-2021	Volkswagen Polo
2009-2014	Volkswagen Routan
2019-2021	Volkswagen T-Cross
2018-2021	Volkswagen T-Roc
2015-2021	Volkswagen Tiguan
2015-2021	Volkswagen Toureg
2019-2021	Volkswagen Virtus

SUPPORTED VOLVO VEHICLES**Volvo**

2011-2019	Volvo S60, S60L
2017-2018	Volvo S90
2018	Volvo V40
2011-2019	Volvo V60
2017-2018	Volvo V90
2013-2016	Volvo S80, S80L
2013-2016	Volvo V70
2018-2019	Volvo XC40
2013-2018	Volvo XC60
2013-2016	Volvo XC70
2016-2018	Volvo XC90

OTHER SUPPORTED VEHICLES**Alpheon**

2011-2015	Alpheon Alpheon
-----------	-----------------

Freightliner

2019-2021	Freightliner Sprinter Van
-----------	---------------------------

Isuzu

1998-2000	Isuzu Hombre
2003-2009	Isuzu Ascender
2006	Isuzu i280 and i350
2007-2009	Isuzu i290 and i370

Opel

2013-2015	Opel Astra
2017-2018	Opel Ampera-e
2013-2015	Opel Insignia

Saab

2010-2012	Saab 9-4x
2010-2011	Saab 9-5
2005-2009	Saab 9-7X



Background

Practice Areas:

- Transportation
- Commercial Litigation
- Construction Litigation
- General Negligence
- Arbitration and Mediation

Education:

- J.D., DePaul University (with Honors), 1996
- B.A., University of Illinois at Urbana-Champaign, 1993

Bar Admissions:

- State of Illinois (1996)
- United States District Court for the Northern District of Illinois (1996)
- United States District Court for the Southern District of Indiana (2004)
- United States District Court for the Southern District of Illinois (2009)

Contact Information:

65 East Wacker Place, Suite 1220
Chicago, IL 60601
Phone: (847) 625-8200
Fax: (847) 625-8262
Email: scanty@cnbgllaw.com

Steven M. Canty, Partner



CANTY NOVY
Canty Novy Bertkau Gordon, LLC

Steve represents both large and small corporations and individuals, as self-insureds and as insureds on behalf of insurance companies. Steve's practice focuses on the defense of insureds and self-insureds with concentration in tort defense in all areas of construction litigation, transportation litigation, construction injury, construction defect litigation and insurance defense. Litigation experience extends throughout the State of Illinois. Steve serves as an on-call emergency on-site presence for catastrophic injuries and accident investigations, available 24 hours a day. Responsibilities include management of files and oversight of associates from initial filing through resolution; establishing and implementing all phases of preparation from initial investigation and strategy for complicated and complex litigation.

In addition, Steve is a member of the Defense Research Institute, Transportation Lawyers Association and the Trucking Industry Defense Association. Steve has written, published and given presentations on numerous topics involving litigation.

Steve is also a member of the Executive Committee of the Transportation Lawyers Association. The TLA is an independent bar association dedicated to the issues of the transportation industry both nationally and internationally. Steve has also served as the editor of The Transportation Lawyer magazine, a legal publication featuring articles submitted by members on the most updated matters related to transportation law. In 2015, Steve was honored with the TLA Distinguished Service Award for advancement of the goals of the Transportation Lawyers Association.

Professional Affiliations:

- Certified Arbitrator for the Nineteenth Judicial Circuit
- Claims & Litigation Management Alliance
- Defense Research Institute
- Trucking Industry Defense Association
- Transportation Lawyers Association (TLA)
 - President (2021-2022)
 - First Vice President (2020 - 2021)
 - Second Vice President (2019-2020)
 - Secretary/Treasurer (2018-2019)
- TLA Chicago Seminar Co-chair(2012-2017)
- TLA Annual Seminar Co-chair (2017)
- Canadian Transport Lawyers Association (CTLA)

Honors & Awards:

- Illinois Super Lawyers
- Illinois Leading Lawyers
- TLA Distinguished Service Award, 2015
- DePaul University Order of the Coif, 1996
- CALI Award, 1995, 1996
- American Jurisprudence Award, 1994



Background

Practice Areas:

- Litigation
- Transportation
- Insurance Coverage
- Cargo
- Construction
- General Negligence
- Appellate

Education:

- J.D., The John Marshall Law School, 2008
- B.A., Lafayette College, 2003

Bar Admissions:

- State of Illinois (2008)
- United States District Court for the Northern District of Illinois (2009)
- United States District Court for the Central District of Illinois (2017)
- United States District Court for the Southern District of Illinois (2018)
- United States District Court for the Northern District of Indiana (2010)

Contact Information:

65 East Wacker Place, Suite 1220
Chicago, IL 60601
Phone: (847) 625-8200
Fax: (847) 625-8262
Email: bbertkau@cnbglaw.com

Bradley A. Bertkau, Partner



CANTY NOVY
Canty Novy Bertkau Gordon, LLC

Brad represents both large and small corporations and individuals, as self-insureds and as insureds on behalf of insurance companies. Brad's practice focuses on the defense of insureds and self-insureds with his primary concentration of legal representation in tort defense in all areas of construction litigation, transportation litigation, construction injury, construction defect litigation and insurance defense. His practice includes handling matters from the initial inception of a claim through trial, including post-judgment appellate work. Responsibilities include management of files from initial filing through resolution; establishing and implementing all phases of preparation from initial investigation and strategy for complicated and complex litigation. Litigation experience extends throughout the State of Illinois. In addition, Brad is a member of the Chicago Bar Association, Transportation Lawyers Association and the Trucking Industry Defense Association. The TLA, TIDA, and CFC are an independent associations dedicated to the issues of the transportation industry both nationally and internationally.

Professional Affiliations:

- Chicago Bar Association
- Transportation Lawyers Association
 - Freight Claims Committee
- Trucking Industry Defense Association
 - Diversity & Inclusion Committee
- Conference of Freight Counsel
- Claims Litigation Management Alliance

Honors & Awards:

- Illinois Super Lawyer Magazine, Super Lawyer
- Leading Lawyer Magazine, Emerging Lawyer

Presentations:

- F4A What? FAANA Preemption as It Relates to Casualty Claims – Transportation Lawyers Association Regional Seminar, 2021

Publications:

- The Transportation Lawyer – The FAANA Preemption of Personal Injury Lawsuits: *Creagan v. Wal-Mart Transp., LLC*
- Broker/Shipper Liability (Presentation 2016)
- Liability Issues – under the Uniform Intermodal Facilities Access Agreement (UIIA) (2016)
- *Case Note – Ready v. United/Goedecke Services, Inc.* (Construction Law Newsletter)

Other:

- Judicial Externship with Administrative Law Judge Claudia Sainsot, of the Illinois Commerce Commission.

Representative Cases:

- *CH Robinson v. Allen Miller*, U.S. Sup. Ct. Dkt. 20-1425, Brief amici curiae of Leading Industry Freight Brokers
- *Acuity v. Decker*, 2015 IL App (2d) 150192
- *Carolina Cas. Ins. Co. v. Estate of Sperl*, 2015 IL App (3d) 130294
- *Rahic v. Satellite Air-Land Motor Serv.*, 2014 IL App (1st) 132900
- *Oshkosh Storage Co. v. Kraze Trucking LLC*, 2014 U.S. Dist. LEXIS 176217
- *Hoffman v. Crane*, 2014 IL App (1st) 122793-U
- *Swanson v. Nims*, 2012 U.S. Dist. LEXIS 25299 (N.D. Ind.)



Background

Practice Areas:

- Civil Defense Litigation
- Transportation and Logistics
- Construction and Premises Liability
- Insurance Litigation and Coverage
- Consultation and Contract Review
- Arbitration and Mediation

Education:

- J.D., Vermont Law School, 2007
- B.A., University of Vermont, 2001

Bar Admissions:

- State of Illinois
- United States District Court for the Northern District of Illinois
- United States District Court for the Southern District of Illinois

Contact Information:

65 East Wacker Place,
Suite 1220
Chicago, IL 60601
Phone: (847) 625-8200
Fax: (847) 625-8262
lgordon@cnbglaw.com

Laura P. Gordon, Partner



CANTY NOVY
Canty Novy Bertkau Gordon, LLC

Laura's practice involves the defense of corporations and individuals with concentration in tort defense in all areas of construction litigation, transportation litigation, construction injury, construction defect litigation, and insurance defense. Her practice also includes insurance coverage litigation in State and Federal courts, with an emphasis on coverage disputes arising from construction and transportation related losses.

Professional Affiliations:

- Chicago Bar Association
- DRI – Member and Participant at annual Women in the Law and Diversity for Success Seminars
- LAGBAC
- CLM Alliance
- Transportation Lawyers Association

Honors & Awards:

- Leading Lawyers – Emerging Lawyer 2015, 2016, 2017, and 2018 and selected by peers in 2017 and 2018 for distinctions in Construction Law and Insurance Related Law.
- *Cum Laude* – Honors from Vermont Law School.
- Academic Excellence Award recipient for Contracts and Evidence

Publications:

- *Illinois Appellate Court Further Expands Vicarious Liability in Commercial Transportation Industry: Hoffman v. Crane*, 2014 IL App (1st) 122793-U, Case Note, *The Transportation Lawyer*, July 2014, Vol. 16, No. 1.
- Vermont Law Review, Staff Member, Vermont Editor, Production Coordinator, and Personal Note Editor (2007-2009)

Representative Cases:

- *Quaid v. Baxter Healthcare Corp.*, 392 Ill. App. 3d 757 (1st Dist. 2009).
- *Payne v. Schneider Nat'l Carriers, Inc.*, 2011 U.S. Dist. LEXIS 44718 - 44718, (S.D. Ill. 2011)
- *Markow v. Dern*, 2012 Ill. Cir. LEXIS 78 (2012)